



City Council Agenda

January 5, 2026
7:00 p.m.

City Council Chambers
97 N. Broad Street
Hillsdale, MI 49242

- I. Call to Order and Pledge of Allegiance**
- II. Roll Call**
- III. Approval of Agenda**
- IV. Public Comments on Agenda Items**
- V. Consent Agenda**
 - A. Approval of Bills
 - 1. City and BPU Claims of December 11, 2025: \$276,862.48
 - 2. Payroll of December 18, 2025: \$211,581.56
 - B. City Council Committee of a Whole Minutes of December 8, 2025
 - C. City Council Minutes of December 15, 2025
 - D. Finance Minutes of December 15, 2025
 - E. Board of Review Minutes of December 9, 2025
- VI. Communications/Petitions**
 - A. 2026 Christmas Tree Recycling Program
 - B. Hillsdale County Commissioner Update – Doug Ingles
- VII. Introduction and Adoption of Ordinances/Public Hearing**
 - A. Ordinance Amendment- Rezoning of 244 E Bacon St.
 - B. Ordinance Amendment- Rezoning of 350 Hillsdale St.
- VIII. Old Business**
- IX. New Business**
 - A. 5 Year Recreation Plan & Resolution
 - B. City Manager Contract Amendment
- X. Miscellaneous Reports**
 - A. Proclamation: None
 - B. Appointment: Library Board – Daniel LaRue
 - C. Other- None
- XI. General Public Comment**
- XII. City Manager's Report**
- XIII. Council Comment**
- XIV. Adjournment**

12/11/2025 12:26 PM
User: lsergent
DB: Hillsdale

INVOICE GL DISTRIBUTION REPORT FOR CITY OF HILLSDALE
EXP CHECK RUN DATES 12/11/2025 - 12/11/2025
BOTH JOURNALIZED AND UNJOURNALIZED
PAID

Page: 1/10

GL Number	Invoice Line Desc	Vendor	Invoice Description	Amount	Check #
Fund 101 GENERAL FUND					
Dept 000.000					
101-000.000-123.000	SOCIAL MEDIA SUBSCRIPTION ARCHIV	CIVICPLUS, LLC	SOCIAL MEDIA SUBSCRIPTION ARCHIVING 202	1,539.09	111921
Total For Dept 000.000				1,539.09	
Dept 175.000 ADMINISTRATIVE SERVICES					
101-175.000-801.000	SOCIAL MEDIA SUBSCRIPTION ARCHIV	CIVICPLUS, LLC	SOCIAL MEDIA SUBSCRIPTION ARCHIVING 202	3,078.18	111921
101-175.000-802.000	KNOWBE4 SECURITY TRAINING 1-26/1	KNOWBE4, INC.	KNOWBE4 SECURITY TRAINING 1-26/1-29	2,127.06	111951
101-175.000-802.000	NET ADMIN NOV 25	SONIT SYSTEMS, LLC	NET ADMIN NOV 25	937.50	111973
101-175.000-806.000	LEGAL FEES - NOV 2025	LOVINGER & THOMPSON, PC	LEGAL FEES - NOV 2025	645.00	111954
Total For Dept 175.000 ADMINISTRATIVE SERVICES				6,787.74	
Dept 191.000 FINANCE DEPARTMENT					
101-191.000-801.000	ACCOUNTING SERVICES - OCT 2025	THE WOODHILL GROUP, LLC	ACCOUNTING SERVICES - OCT 2025	4,344.33	111980
Total For Dept 191.000 FINANCE DEPARTMENT				4,344.33	
Dept 215.000 CITY CLERK DEPARTMENT					
101-215.000-726.000	NAME PLATES/HOLDERS - PRICE	CURRENT OFFICE SOLUTIONS	NAME PLATES/HOLDERS - SMITH, LEROUX, PF	40.98	111924
101-215.000-726.000	COUNCIL BOOK AND PAPER VOL 36	GOVERNMENT FORMS AND SUPPL	COUNCIL BOOK AND PAPER VOL 36	290.43	111935
101-215.000-801.000	COPIER LEASES - CITY	CURRENT OFFICE SOLUTIONS	COPIER LEASES - CITY	279.50	111924
101-215.000-905.000	PUBLIC NOTICES: APPEAL 11 ELM HI	GANNETT MICHIGAN LOCALIQ	PUBLIC NOTICES: APPEAL 11 ELM HILL, ORI	334.30	111933
101-215.000-905.000	NOTICES: PH REZON 244 E BACON ST	GANNETT MICHIGAN LOCALIQ	NOTICES: PH REZON 244 E BACON ST, 25 RE	158.20	111933
Total For Dept 215.000 CITY CLERK DEPARTMENT				1,103.41	
Dept 253.000 CITY TREASURER					
101-253.000-801.000	PRINT TAX BILLS - WINTER 2025	KCI	PRINT TAX BILLS - WINTER 2025	2,458.26	111950
Total For Dept 253.000 CITY TREASURER				2,458.26	
Dept 257.000 ASSESSING DEPARTMENT					
101-257.000-801.000	COPIER LEASES - CITY	CURRENT OFFICE SOLUTIONS	COPIER LEASES - CITY	164.35	111924
101-257.000-801.000	CONTRACTUAL SERVICES	HILLSDALE CO EQUALIZATION 2025 (2026?)	PARCEL MAPPING & ROLL MAIN	3,367.20	111940
101-257.000-810.000	2026 MMAAO MEMBERSHIP DUES	MID MICH ASSOC OF ASSESSIN	2026 MMAAO MEMBERSHIP DUES	25.00	111957
101-257.000-850.000	MONTHLY VERIZON BILL - DEC25	VERIZON WIRELESS	MONTHLY VERIZON BILL - DEC25	20.02	111989
Total For Dept 257.000 ASSESSING DEPARTMENT				3,576.57	
Dept 262.000 ELECTIONS					
101-262.000-801.000	REIMBURSEMENT EXPENSES FOR 11-4-	HILLSDALE CO CLERK	REIMBURSEMENT EXPENSES FOR 11-4-25 ELEC	4,094.46	111939
Total For Dept 262.000 ELECTIONS				4,094.46	
Dept 265.000 BUILDING AND GROUNDS					
101-265.000-726.000	WATER - CITY HALL	HEFFERNAN SOFT WATER SERV	WATER DELIVERY SERVICE	12.76	111937
101-265.000-801.000	MATS - CITY HALL	CINTAS CORPORATION	MATS - CITY HALL	27.63	111920
101-265.000-801.000	CITY HALL CLEANING - NOV 2025	EAST 2 WEST ENTERPRISES, I	CITY HALL CLEANING - NOV 2025	675.00	111928
101-265.000-850.000	TELEPHONE - CITY HALL	ACD.NET	TELEPHONE - CITY HALL	58.29	111908
101-265.000-850.000	OOMA FAXING EQUIP DEC 25	OOMA, INC.	OOMA FAXING EQUIP DEC 25	129.86	111962
101-265.000-850.000	OOMA FAXING EQUIP NOV 25	OOMA, INC.	OOMA FAXING EQUIP NOV 25	129.86	111962
Total For Dept 265.000 BUILDING AND GROUNDS				1,033.40	
Dept 301.000 POLICE DEPARTMENT					
101-301.000-726.000	MARKRS AND MEMO BOOKS FOR POLICE	CURRENT OFFICE SOLUTIONS	MARKRS AND MEMO BOOKS FOR POLICE OFFICE	79.72	111924
101-301.000-740.301	NOVEMBER POLICE GASOLINE	WATKINS TRANSPORT INC	NOVEMBER POLICE GASOLINE	2,459.52	111993
101-301.000-801.000	COPIER LEASES - CITY	CURRENT OFFICE SOLUTIONS	COPIER LEASES - CITY	34.77	111924
101-301.000-801.000	ANNUAL SOFTWARE SERVICE MAINT. F	HILLSDALE CO CENTRAL DISP	ANNUAL SOFTWARE SERVICE MAINT. FEE FOR	220.55	111938
101-301.000-801.000	TLO USE DECEMBER POLICE	TRANSUNION RISK AND ALTER	TLO USE DECEMBER POLICE	100.00	111983
101-301.000-801.000	POLICE PHONES	VERIZON WIRELESS	PHONE BILL FOR POLICE AND FIRE OCT/NOV	1,547.48	111989

12/11/2025 12:26 PM
User: lsergent
DB: Hillsdale

INVOICE GL DISTRIBUTION REPORT FOR CITY OF HILLSDALE
EXP CHECK RUN DATES 12/11/2025 - 12/11/2025
BOTH JOURNALIZED AND UNJOURNALIZED
PAID

Page: 2/10

GL Number	Invoice Line Desc	Vendor	Invoice Description	Amount	Check #
Fund 101 GENERAL FUND					
Dept 301.000 POLICE DEPARTMENT					
101-301.000-930.000	UNIT 2-1 SRO VEHICLE LOW COOLANT STILLWELL FORD MERCURY, IN	UNIT 2-1 SRO VEHICLE LOW COOLANT AND RE		602.30	111977
Total For Dept 301.000 POLICE DEPARTMENT				5,044.34	
Dept 336.000 FIRE DEPARTMENT					
101-336.000-726.000	WATERPROOF DRY BOX WINDOW BREAKER	AMAZON CAPITAL SERVICES, I	WATERPROOF DRY BOX WINDOW BREAKER FOR E	33.12	111909
101-336.000-726.000	55 GAL IRONHOLD DRUMLINER FIRE DEPT	GELZER HJ & SON INC	55 GAL IRONHOLD DRUMLINER FIRE DEPT	14.97	111934
101-336.000-726.000	SUPPLIES FOR FIRE DEPT	PERFORMANCE AUTOMOTIVE	SUPPLIES FOR FIRE DEPT	15.85	111963
101-336.000-740.000	FIRE FUEL BILL NOVEMBER 2025	WATKINS TRANSPORT INC	FIRE FUEL BILL NOVEMBER 2025	464.35	111993
101-336.000-801.000	TYLER MOBILITY ANNUAL FEE FIRE DEPT	HILLSDALE CO CENTRAL DISPA	TYLER MOBILITY ANNUAL FEE FIRE DEPT 1 I	44.11	111938
101-336.000-801.000	PREVENTATIVE MAINT FIRE TRUCK 2	RILEY'S APPARTATUS SERVICE	PREVENTATIVE MAINT FIRE TRUCK 2	1,520.69	111967
101-336.000-801.000	PREVENTATIVE MAINT FIRE TRUCK 3	RILEY'S APPARTATUS SERVICE	PREVENTATIVE MAINT FIRE TRUCK 3	725.00	111967
101-336.000-801.000	PREVENTATIVE MAINT FIRE TRUCK 1	RILEY'S APPARTATUS SERVICE	PREVENTATIVE MAINT FIRE TRUCK 1	1,420.17	111967
101-336.000-801.000	FIRE DEPT TABLET	VERIZON WIRELESS	PHONE BILL FOR POLICE AND FIRE OCT/NOV	40.02	111989
Total For Dept 336.000 FIRE DEPARTMENT				4,278.28	
Dept 441.000 PUBLIC SERVICES DEPARTMENT					
101-441.000-726.000	WATER - 149 WATERWORKS	HEFFERNAN SOFT WATER SERV	WATER DELIVERY SERVICE	6.38	111937
101-441.000-801.000	MATS, MOP	CINTAS CORPORATION	MATS, RAGS, FENDER SKIRT, MOP	34.99	111920
101-441.000-801.000	COPIER LEASES - CITY	CURRENT OFFICE SOLUTIONS	COPIER LEASES - CITY	161.08	111924
101-441.000-850.000	MONTHLY VERIZON BILL - DEC25	VERIZON WIRELESS	MONTHLY VERIZON BILL - DEC25	42.92	111989
Total For Dept 441.000 PUBLIC SERVICES DEPARTMENT				245.37	
Dept 567.000 CEMETERIES					
101-567.000-801.000	TREE SERVICE - CEMETERY	LONSBERRY, JEFFREY	CITYWIDE TREE TIMMING AND REMOVAL - STC	1,350.00	111923
101-567.000-801.000	CEMETERY TREE REMOVAL/TRIMMING S	LONSBERRY, JEFFREY	CEMETERY TREE REMOVAL/TRIMMING STORM D	6,800.00	111923
101-567.000-801.000	TREE SERVICE - CEMETERY	LONSBERRY, JEFFREY	CITYWIDE TREE REMOVAL/TRIMMING	1,125.00	111923
101-567.000-801.000	1 PORTA POT - BOAT LAUNCH	LAPEW SANITATION - THOMAS	PORTA POT SERVICE	115.00	111952
Total For Dept 567.000 CEMETERIES				9,390.00	
Dept 595.000 AIRPORT					
101-595.000-740.000	DIESEL FUEL - TRACTOR	BRINER OIL CO, INC	DIESEL FUEL - TRACTOR	525.35	111918
101-595.000-801.000	FIRE ALARM MONITORING - AIRPORT	TOTAL FIRE & SECURITY, LLC	FIRE ALARM MONITORING - AIRPORT TERMINA	384.00	111982
101-595.000-801.000	REFUELING TRUCK RENTAL BILLING	AVFUEL CORP	REFUELING TRUCK RENTAL BILLING	950.00	1316
101-595.000-801.000	MERCHANT EQUIP RENTAL BILLING	AVFUEL CORP	MERCHANT EQUIP RENTAL BILLING	20.00	1316
101-595.000-850.000	TELEPHONE - AIRPORT	ACD.NET	TELEPHONE - AIRPORT	38.88	111908
101-595.000-920.000	PROPANE - NEW TERMINAL	SPRATT'S TRADING POST INC	PROPANE - NEW TERMINAL	657.24	111974
101-595.000-920.000	PROPANE - OLD TERMINAL	SPRATT'S TRADING POST INC	PROPANE - OLD TERMINAL	446.24	111974
101-595.000-920.000	UTILITIES	SPRATT'S TRADING POST INC	PROPANE - CORP 2 HANGAR	425.88	111974
101-595.000-930.000	BELT	GREENMARK EQUIPMENT	BELT	102.90	111936
101-595.000-930.000	BELT	GREENMARK EQUIPMENT	BELT	102.90	111936
101-595.000-930.000	BELT	GREENMARK EQUIPMENT	BELT	110.51	111936
Total For Dept 595.000 AIRPORT				3,763.90	
Dept 701.000 PLANNING DEPARTMENT					
101-701.000-726.000	NAME PLATES/HOLDERS - SMITH, LER	CURRENT OFFICE SOLUTIONS	NAME PLATES/HOLDERS - SMITH, LEROUX, PF	81.96	111924
101-701.000-801.000	COPIER LEASES - CITY	CURRENT OFFICE SOLUTIONS	COPIER LEASES - CITY	164.35	111924
Total For Dept 701.000 PLANNING DEPARTMENT				246.31	
Dept 756.000 PARKS					
101-756.000-801.000	TREE SERVICE - PARKS	LONSBERRY, JEFFREY	CITYWIDE TREE TIMMING AND REMOVAL - STC	1,250.00	111923
101-756.000-801.000	TREE SERVICE - PARKS	LONSBERRY, JEFFREY	CITYWIDE TREE REMOVAL/TRIMMING	1,875.00	111923
101-756.000-801.000	1 PORTA POT - OAK GROVE	LAPEW SANITATION - THOMAS	PORTA POT SERVICE	110.00	111952
Total For Dept 756.000 PARKS				3,235.00	

12/11/2025 12:26 PM
User: lsergent
DB: Hillsdale

INVOICE GL DISTRIBUTION REPORT FOR CITY OF HILLSDALE
EXP CHECK RUN DATES 12/11/2025 - 12/11/2025
BOTH JOURNALIZED AND UNJOURNALIZED
PAID

Page: 3/10

GL Number	Invoice Line Desc	Vendor	Invoice Description	Amount	Check #
Fund 101 GENERAL FUND					
Total For Fund 101 GENERAL FUND				51,140.46	
Fund 202 MAJOR ST./TRUNKLINE FUND					
Dept 450.000 STREET SURFACE					
202-450.000-801.588	CONTRACTUAL SERVICES - ENGINEERING	ROWE PROFESSIONAL SERVICES	ENGINEERING SERVICES 2025 SEPTEMBER SEP	3,820.50	111969
202-450.000-801.588	ENGINEERING SERVICES MAJOR STREET	THE MANNIK & SMITH GROUP, MANNIK & SMITH	ENGINEERING SERVICES 2025 SEPTEMBER SEP	52.25	111979
Total For Dept 450.000 STREET SURFACE				3,872.75	
Dept 470.000 TREES					
202-470.000-801.000	TREE SERVICE - MAJOR	LONSBERRY, JEFFREY	CITYWIDE TREE TIMMING AND REMOVAL - STREET	1,575.00	111923
202-470.000-801.000	TREE SERVICE - MAJOR	LONSBERRY, JEFFREY	CITYWIDE TREE REMOVAL/TRIMMING	3,650.00	111923
Total For Dept 470.000 TREES				5,225.00	
Dept 490.000 TRAFFIC					
202-490.000-726.000	SUPPLIES	GELZER HJ & SON INC	PAINT ROLLERS - COOK ST CURB	10.99	111934
Total For Dept 490.000 TRAFFIC				10.99	
Total For Fund 202 MAJOR ST./TRUNKLINE FUND				9,108.74	
Fund 203 LOCAL STREET FUND					
Dept 450.000 STREET SURFACE					
203-450.000-801.588	ENGINEERING SERVICES - LOCAL STREET	ROWE PROFESSIONAL SERVICES	ENGINEERING SERVICES 2025 SEPTEMBER SEP	526.50	111969
203-450.000-801.588	ENGINEERING SERVICES LOCAL STREET	THE MANNIK & SMITH GROUP, MANNIK & SMITH	ENGINEERING SERVICES 2025 SEPTEMBER SEP	52.25	111979
Total For Dept 450.000 STREET SURFACE				578.75	
Dept 470.000 TREES					
203-470.000-801.000	TREE SERVICE - LOCAL	LONSBERRY, JEFFREY	CITYWIDE TREE TIMMING AND REMOVAL - STREET	375.00	111923
203-470.000-801.000	TREE SERVICE - LOCAL	LONSBERRY, JEFFREY	CITYWIDE TREE REMOVAL/TRIMMING	350.00	111923
Total For Dept 470.000 TREES				725.00	
Total For Fund 203 LOCAL STREET FUND				1,303.75	
Fund 204 MUNICIPAL STREET FUND					
Dept 572.000 LEAF COLLECTION					
204-572.000-801.000	2025 LEAF COLLECTION	DRY MAR TRUCKING & DIRTWORK	2025 LEAF COLLECTION	747.50	111927
Total For Dept 572.000 LEAF COLLECTION				747.50	
Total For Fund 204 MUNICIPAL STREET FUND				747.50	
Fund 247 TAX INCREMENT FINANCE AUTH.					
Dept 175.000 ADMINISTRATIVE SERVICES					
247-175.000-818.000	INSURANCE - PIPE ORGAN DAWN THEATRE	VESTED RISK STRATEGIES INC	INSURANCE - PIPE ORGAN DAWN THEATRE	32.00	111990
Total For Dept 175.000 ADMINISTRATIVE SERVICES				32.00	
Dept 900.000 CAPITAL OUTLAY					
247-900.000-920.000	507035798 - 110 N BROAD - DAWN	MICHIGAN GAS UTILITIES	NATURAL GAS UTILITY - 110 N BROAD ST	37.25	1302
247-900.000-920.000	507035798 - 110 N BROAD - DAWN	MICHIGAN GAS UTILITIES	NATURAL GAS UTILITY - 110 N BROAD ST	42.00	1303
247-900.000-920.000	507035798 - 110 N BROAD - DAWN	MICHIGAN GAS UTILITIES	NATURAL GAS UTILITY - 110 N BROAD ST	44.74	1304
247-900.000-920.000	507035798 - 110 N BROAD - DAWN	MICHIGAN GAS UTILITIES	NATURAL GAS UTILITY - 110 N BROAD ST	42.21	1305
247-900.000-920.000	507035798 - 110 N BROAD - DAWN	MICHIGAN GAS UTILITIES	NATURAL GAS UTILITY - 110 N BROAD ST	128.58	1306
Total For Dept 900.000 CAPITAL OUTLAY				294.78	
Total For Fund 247 TAX INCREMENT FINANCE AUTH.				326.78	
Fund 271 LIBRARY FUND					

12/11/2025 12:26 PM
User: lsergent
DB: Hillsdale

INVOICE GL DISTRIBUTION REPORT FOR CITY OF HILLSDALE
EXP CHECK RUN DATES 12/11/2025 - 12/11/2025
BOTH JOURNALIZED AND UNJOURNALIZED
PAID

Page: 4/10

GL Number	Invoice Line Desc	Vendor	Invoice Description	Amount	Check #
Fund 271 LIBRARY FUND					
Dept 790.000 LIBRARY					
271-790.000-726.000	CHILDRENS HANDSOAP	AMAZON CAPITAL SERVICES,	1BOOKS AND HANDSOAP	10.54	111909
271-790.000-726.000	OFFICE SUPPLIES	AMAZON CAPITAL SERVICES,	1YOTO CARD & OFFICE SUPPLIES	36.08	111909
271-790.000-726.000	PAPER TOWELS	AMAZON CAPITAL SERVICES,	1PAPER TOWELS	30.82	111909
271-790.000-801.000	MONTHLY COPIER LEASE AND PRINTS	CURRENT OFFICE SOLUTIONS	MONTHLY COPIER LEASE AND PRINTS	167.22	111924
271-790.000-801.000	MONTHLY BATHROOM/FOTER CLEANING	EAST 2 WEST ENTERPRISES,	1MONTHLY BATHROOM/FOTER CLEANING	400.00	111928
271-790.000-801.000	WATER COOLER RENTAL	HEFFERNAN SOFT WATER SERV	WATER COOLER RENTAL	12.00	111937
271-790.000-850.000	TELEPHONE - LIBRARY	ACD.NET	TELEPHONE - LIBRARY	19.47	111908
271-790.000-850.000	OOMA FAXING EQUIP DEC 25	OOMA, INC.	OOMA FAXING EQUIP DEC 25	64.93	111962
271-790.000-850.000	OOMA FAXING EQUIP NOV 25	OOMA, INC.	OOMA FAXING EQUIP NOV 25	64.93	111962
271-790.000-982.000	BOOKS - MEMOIR OF SORTS	AMAZON CAPITAL SERVICES,	1BOOKS AND HANDSOAP	13.69	111909
271-790.000-982.000	LIBRARY OFTHINGS - CAR BATTERY J	AMAZON CAPITAL SERVICES,	1LIBRARY OFTHINGS - CAR BATTERY JUMPER	29.99	111909
271-790.000-982.000	MOVIES	AMAZON CAPITAL SERVICES,	1MOVIES & BOOK REPLACEMENT	18.55	111909
271-790.000-982.000	BOOKS FOR SERIES DEC25 ADULT	AMAZON CAPITAL SERVICES,	1BOOKS FOR SERIES DEC25 ADULT	21.22	111909
271-790.000-982.000	BOOKS - DEC25 ADULT	INGRAM LIBRARY SERVICES	BOOKS - DEC25 ADULT	17.58	111946
271-790.000-982.000	BOOKS - SEP25 ADULT	INGRAM LIBRARY SERVICES	BOOKS - SEP25 ADULT	33.44	111946
271-790.000-982.000	BOOKS - OCT25 ADULT	INGRAM LIBRARY SERVICES	BOOKS - OCT25 ADULT	47.35	111946
271-790.000-982.000	BOOKS - NOV25 ADULT	INGRAM LIBRARY SERVICES	BOOKS - NOV25 ADULT	274.22	111946
271-790.000-982.000	BOOKS - NOV25 ADULT	INGRAM LIBRARY SERVICES	BOOKS - NOV25 ADULT	15.43	111946
271-790.000-982.000	BOOKS - NOV25 ADULT	INGRAM LIBRARY SERVICES	BOOKS - NOV25 ADULT	127.96	111946
271-790.000-982.000	BOOKS - OCT25 ADULT	INGRAM LIBRARY SERVICES	BOOKS - OCT25 ADULT	18.13	111946
271-790.000-982.000	BOOKS - NOV25 ADULT	INGRAM LIBRARY SERVICES	BOOKS - NOV25 ADULT	17.08	111946
271-790.000-982.000	BOOKS - OCT25 ADULT	INGRAM LIBRARY SERVICES	BOOKS - OCT25 ADULT	18.13	111946
271-790.000-982.000	BOOKS - NOV25 ADULT	INGRAM LIBRARY SERVICES	BOOKS - NOV25 ADULT	86.31	111946
271-790.000-982.000	BOOKS - DEC25 ADULT	INGRAM LIBRARY SERVICES	BOOKS - DEC25 ADULT	149.23	111946
271-790.000-982.000	OCT25 ADULT BOOKS	SEBCO BOOKS	OCT25 ADULT BOOKS	355.67	111971
271-790.000-982.002	EVERYTHING IS TUBERCULOSIS	AMAZON CAPITAL SERVICES,	1MOVIES & BOOK REPLACEMENT	11.81	111909
271-790.000-982.002	MELCAT PATRON DAMAGED ITEM	KALAMAZOO PUBLIC LIBRARY	MELCAT PATRON DAMAGED ITEM	25.00	111949
Total For Dept 790.000 LIBRARY				2,086.78	
Dept 792.000 LIBRARY - CHILDREN'S AREA					
271-792.000-726.000	APPLE JUICE FOR LBW	AMAZON CAPITAL SERVICES,	1APPLE JUICE FOR LBW	4.31	111909
271-792.000-982.000	YOTO SERIES OF UNFORTUNATE	AMAZON CAPITAL SERVICES,	1YOTO CARD & OFFICE SUPPLIES	27.99	111909
271-792.000-982.000	BOOKS - DEC25 CHI TO COMPLETE SE	AMAZON CAPITAL SERVICES,	1BOOKS - DEC25 CHI TO COMPLETE SERIS	33.44	111909
271-792.000-982.000	BOOKS - NOV25 KIDS	INGRAM LIBRARY SERVICES	BOOKS - NOV25 KIDS	21.28	111946
271-792.000-982.000	BOOKS - OCT25 CHI	INGRAM LIBRARY SERVICES	BOOKS - OCT25 CHI	11.64	111946
271-792.000-982.000	BOOKS - NOV25 CHI	INGRAM LIBRARY SERVICES	BOOKS - NOV25 CHI	58.09	111946
271-792.000-982.000	BOOKS - NOV25 CHI	INGRAM LIBRARY SERVICES	BOOKS - NOV25 CHI	9.12	111946
271-792.000-982.000	BOOKS - NOV25 CHI	INGRAM LIBRARY SERVICES	BOOKS - NOV25 CHI	8.96	111946
271-792.000-982.000	BOOKS - NOV25 CHI	INGRAM LIBRARY SERVICES	BOOKS - NOV25 CHI	11.27	111946
271-792.000-982.000	BOOKS - NOV25 CHI	INGRAM LIBRARY SERVICES	BOOKS - NOV25 CHI	35.63	111946
271-792.000-982.000	BOOKS - NOV25 CHI	INGRAM LIBRARY SERVICES	BOOKS - NOV25 CHI	12.32	111946
271-792.000-982.000	BOOKS - DEC25 CHI	INGRAM LIBRARY SERVICES	BOOKS - DEC25 CHI	382.56	111946
271-792.000-982.000	BOOKS - DEC25 CHI	INGRAM LIBRARY SERVICES	BOOKS - DEC25 CHI	29.44	111946
Total For Dept 792.000 LIBRARY - CHILDREN'S AREA				646.05	
Total For Fund 271 LIBRARY FUND				2,732.83	
Fund 481 AIRPORT IMPROVEMENT FUND					
Dept 000.000					
481-000.000-263.000	SALES TAX - NOV 20025	STATE OF MICHIGAN	SALES TAX - NOV 20025	588.31	683
481-000.000-687.300	SALES TAX - NOV 20025	STATE OF MICHIGAN	SALES TAX - NOV 20025	(2.94)	683
Total For Dept 000.000				585.37	

INVOICE GL DISTRIBUTION REPORT FOR CITY OF HILLSDALE
EXP CHECK RUN DATES 12/11/2025 - 12/11/2025
BOTH JOURNALIZED AND UNJOURNALIZED
PAID

GL Number	Invoice Line Desc	Vendor	Invoice Description	Amount	Check #
Fund 481 AIRPORT IMPROVEMENT FUND					
Dept 900.000 CAPITAL OUTLAY					
481-900.000-740.295	JET A FUEL	AVFUEL CORP	JET A FUEL	20,661.73	1316
481-900.000-740.295	AVIATION GASOLINE	AVFUEL CORP	AVIATION GASOLINE	13,261.41	1316
Total For Dept 900.000 CAPITAL OUTLAY				33,923.14	
Total For Fund 481 AIRPORT IMPROVEMENT FUND				34,508.51	
Fund 582 ELECTRIC FUND					
Dept 000.000					
582-000.000-110.000	CLAMP ROD/KIT CABLE CLEANING PRE	POWER LINE SUPPLY	CLAMP ROD/KIT CABLE CLEANING PREP	265.14	111965
582-000.000-110.000	WIRE - URD - 4/0 TRIPLEX (POWER LINE SUPPLY	WIRE INVENTORY	4,780.00	111965
582-000.000-110.000	FUSE LINK - 3 AMP T	POWER LINE SUPPLY	INVENTORY	69.60	111965
582-000.000-110.000	BRACKET - LARGE T	POWER LINE SUPPLY	INVENTORY	299.65	111965
582-000.000-110.000	SECONDARY PEDESTAL	POWER LINE SUPPLY	URD PEDESTALS	1,360.10	111965
582-000.000-110.000	CONDUIT - 2" PVC SCHEDULE 4	POWER LINE SUPPLY	CONDUIT INVENTORY	1,358.00	111965
582-000.000-202.100	4CCH	9 S WEST ST LLC	UB refund for account: 026742	260.91	111907
582-000.000-202.100	4CCH	B & KD PROPERTIES LLC	UB refund for account: 016886	74.55	111911
582-000.000-202.100	4CCH	BEEKER, ALAN & JULIE	UB refund for account: 010353	52.00	111913
582-000.000-202.100	4CCH	BERNARD, MARK L	UB refund for account: 019290	115.67	111914
582-000.000-202.100	4CCH	BLONDE, JULIE J	UB refund for account: 009870	31.00	111917
582-000.000-202.100	4CCH	FITZMAURICE, DAVID S	UB refund for account: 026253	17.00	111932
582-000.000-202.100	4CCH	HODGE, KENNETH A	UB refund for account: 021152	287.05	111942
582-000.000-202.100	4CCH	MORAN, CECILIA J	UB refund for account: 026947	13.00	111958
582-000.000-202.100	4CCH	NACEY, RICHARD B	UB refund for account: 030305	107.50	111959
582-000.000-202.100	4CCH	TO THE ESTATE OF PHILIP M	UB refund for account: 022568	135.83	111981
582-000.000-249.100	OPERATION ROUND-UP - NOV 2025	COMMUNITY ACTION AGENCY	OPERATION ROUND-UP - NOV 2025	2,234.72	111922
582-000.000-249.100	LIEAF-6099 NOVEMBER 2025 P.A. 95	LARA - MI PUBLIC SERVICE (LIEAF-6099 NOVEMBER 2025 P.A. 95	5,974.49	111953
582-000.000-263.000	SALES TAX - NOV 20025	STATE OF MICHIGAN	SALES TAX - NOV 20025	31,944.39	683
582-000.000-692.200	SALES TAX - NOV 20025	STATE OF MICHIGAN	SALES TAX - NOV 20025	(192.62)	683
Total For Dept 000.000				49,187.98	
Dept 175.000 ADMINISTRATIVE SERVICES					
582-175.000-726.000	SUPPLIES - 45 MONROE STREET	CURRENT OFFICE SOLUTIONS	SUPPLIES - 45 MONROE STREET	3.99	111924
582-175.000-726.000	COPIES/CONTRACT BILLING - NOV 2	CURRENT OFFICE SOLUTIONS	COPIES/CONTRACT BILLING - NOV 2025	176.65	111924
582-175.000-726.000	WATER 45 MONROE ST	RUPERT'S CULLIGAN	WATER 45 MONROE ST	16.50	111970
582-175.000-801.000	MATS - 45 MONROE ST	CINTAS CORPORATION	MATS - 45 MONROE ST	2.50	111920
582-175.000-801.000	COPIES/CONTRACT BILLING - NOV 2	CURRENT OFFICE SOLUTIONS	COPIES/CONTRACT BILLING - NOV 2025	138.13	111924
582-175.000-801.000	PRINTING/POSTAGE AND HANDLING -	DELAWARE SYSTEMS	PRINTING/POSTAGE AND HANDLING - NOV 202	1,606.46	111925
582-175.000-801.000	BPU BOARD MEETING PER DIEM - DEC	DOUGLAS J. DOBROZSI	BPU BOARD MEETING PER DIEM - DEC 2025	12.50	111926
582-175.000-801.000	BPU CLEANING - OCT 2025	EAST 2 WEST ENTERPRISES, I	BPU CLEANING - NOV 2025	210.00	111928
582-175.000-801.000	BPU BOARD MEETING PER DIEM - DEC	ERIC POTES	BPU BOARD MEETING PER DIEM - DEC 2025	12.50	111929
582-175.000-801.000	BPU BOARD MEETING PER DIEM - DEC	JEREMIAH JASON HODSHIRE	BPU BOARD MEETING PER DIEM - DEC 2025	12.50	111947
582-175.000-801.000	WEB ACCESS/UTILITY EXCHANGE - NO	ONLINE INFORMATION SERVICE	WEB ACCESS/UTILITY EXCHANGE - NOV 2025	44.60	111961
582-175.000-801.000	BPU BOARD MEETING PER DIEM - DEC	PHILIP DAVID MCDOWELL	BPU BOARD MEETING PER DIEM - DEC 2025	12.50	111964
582-175.000-801.000	BPU BOARD MEETING PER DIEM - DEC	STEVEN WELLS	BPU BOARD MEETING PER DIEM - DEC 2025	12.50	111976
582-175.000-801.000	ACCOUNTING SERVICES - OCT 2025	THE WOODHILL GROUP, LLC	ACCOUNTING SERVICES - OCT 2025	2,172.16	111980
582-175.000-801.000	CREDIT CARD PROCESSING FEES - NO	INVOICE CLOUD, INC.	CREDIT CARD PROCESSING FEES - NOV 2025	205.16	682
582-175.000-802.000	TECHNICAL SERVICES	AMAZON CAPITAL SERVICES, I	LASER POINTERS	26.88	111909
582-175.000-802.000	KNOWBE4 SECURITY TRAINING 1-26/1	KNOWBE4, INC.	KNOWBE4 SECURITY TRAINING 1-26/1-29	1,063.52	111951
582-175.000-802.000	NET ADMIN NOV 25	SONIT SYSTEMS, LLC	NET ADMIN NOV 25	562.51	111973
582-175.000-802.000	MILSOFT DISSPATCH LICENSE 12-25	MILSOFT	MILSOFT DISSPATCH LICENSE 12-25	275.63	111988
582-175.000-802.000	IVR POOLED MONTHLY OUTAGE SUB 12	MILSOFT	IVR POOLED MONTHLY OUTAGE SUB 12-25	252.78	111988
582-175.000-850.000	TELEPHONE - POWER PLANT	ACD.NET	TELEPHONE - POWER PLANT	38.88	111908
582-175.000-850.000	FIBER - 45 MONROE STREET	ACD.NET	FIBER - 45 MONROE STREET	100.00	111908

GL Number	Invoice Line Desc	Vendor	Invoice Description	Amount	Check #
Fund 582 ELECTRIC FUND					
Dept 175.000 ADMINISTRATIVE SERVICES					
582-175.000-850.000	OOMA FAXING EQUIP DEC 25	OOMA, INC.	OOMA FAXING EQUIP DEC 25	32.47	111962
582-175.000-850.000	OOMA FAXING EQUIP NOV 25	OOMA, INC.	OOMA FAXING EQUIP NOV 25	32.47	111962
582-175.000-850.000	MONTHLY VERIZON BILL - DEC25	VERIZON WIRELESS	MONTHLY VERIZON BILL - DEC25	467.07	111989
582-175.000-880.000	COMMUNITY PROMOTION - NOV 2025	MCKIBBIN MEDIA GROUP, INC.	COMMUNITY PROMOTION - NOV 2025	125.00	111955
582-175.000-920.000	503214966 - 45 MONROE	MICHIGAN GAS UTILITIES	NATURAL GAS UTILITY - 45 MONROE	234.25	1310
Total For Dept 175.000 ADMINISTRATIVE SERVICES				7,850.11	
Dept 544.000 OPERATIONS					
582-544.000-726.000	CORDLESS SCRUBBER	AMAZON CAPITAL SERVICES, I	CORDLESS SCRUBBER	53.54	111909
582-544.000-726.000	GORILLA TAPE	GELZER HJ & SON INC	GORILLA TAPE	78.96	111934
582-544.000-726.000	LED BULBS	GELZER HJ & SON INC	LED BULBS	21.49	111934
582-544.000-726.000	FASTENERS & ANCHORS	GELZER HJ & SON INC	FASTENERS & ANCHORS	13.99	111934
582-544.000-726.000	QUICK LINK/HARDWARE	GELZER HJ & SON INC	QUICK LINK/HARDWARE	34.72	111934
582-544.000-726.000	WIRE HOPE CLIP/HARDWARE	GELZER HJ & SON INC	WIRE HOPE CLIP/HARDWARE	7.46	111934
582-544.000-726.000	FORSTNER BIT	GELZER HJ & SON INC	FORSTNER BIT	14.99	111934
582-544.000-726.000	CLEANER	GELZER HJ & SON INC	CLEANER	30.98	111934
582-544.000-726.000	CLEANING WIPES/PAINT	GELZER HJ & SON INC	CLEANING WIPES/PAINT	36.11	111934
582-544.000-726.000	LESTOIL	HILLSDALE MARKET HOUSE, I	LESTOIL	16.77	111941
582-544.000-730.000	PULSARE GARAGE DOOR OPENER	AMAZON CAPITAL SERVICES, I	PULSARE GARAGE DOOR OPENER	45.00	111909
582-544.000-740.000	BPU OCT 2025 FUEL	WATKINS TRANSPORT INC	BPU NOV 2025 FUEL	1,949.58	111993
582-544.000-801.000	NPDES ANNUAL PERMIT FEE, 2024 MI	STATE OF MICHIGAN EGLE	NPDES ANNUAL PERMIT FEE, 2025 MIG250452	150.00	111975
582-544.000-920.000	504504154 - 37 MONROE	MICHIGAN GAS UTILITIES	NATURAL GAS UTILITY - 37 MONROE	26.59	1309
582-544.000-920.000	504504154 - 37 MONROE	MICHIGAN GAS UTILITIES	NATURAL GAS UTILITY - 37 MONROE	77.56	1312
582-544.000-930.025	GASKETS	CEM SUPPLY, INC	GASKETS	7.68	111919
582-544.000-930.025	HYDRONICS PUMP	CEM SUPPLY, INC	HYDRONICS PUMP	6,520.99	111919
582-544.000-930.025	FLEX CONNECTOR	GELZER HJ & SON INC	FLEX CONNECTOR	3.29	111934
Total For Dept 544.000 OPERATIONS				9,089.70	
Dept 900.000 CAPITAL OUTLAY					
582-900.000-970.000-171003	PVC CEMENT	AMERICAN COPPER AND BRASS,	PVC CEMENT	42.36	111910
582-900.000-970.000-171003	2NS SAND HALF MOON LA	BECKER & SCRIVENS CONCRETE	2NS SAND HALF MOON LA	65.55	111912
582-900.000-970.000-171003	2NS SAND/HALF MOON LAKE	BECKER & SCRIVENS CONCRETE	2NS SAND/HALF MOON LAKE	40.05	111912
Total For Dept 900.000 CAPITAL OUTLAY				147.96	
Total For Fund 582 ELECTRIC FUND				66,275.75	
Fund 588 DIAL A RIDE					
Dept 596.000 DIAL-A-RIDE					
588-596.000-726.000	WATER - DIAL-A-RIDE	HEFFERNAN SOFT WATER SERV	WATER DELIVERY SERVICE	30.52	111937
588-596.000-740.000	NOVEMBER FUEL - DART	WATKINS TRANSPORT INC	NOVEMBER FUEL - DART	1,629.72	111993
588-596.000-801.000	DART-RUGS & MOPS 12/4/2025	CINTAS CORPORATION	DART-RUGS & MOPS 12/4/2025	24.90	111920
Total For Dept 596.000 DIAL-A-RIDE				1,685.14	
Total For Fund 588 DIAL A RIDE				1,685.14	
Fund 590 SEWER FUND					
Dept 175.000 ADMINISTRATIVE SERVICES					
590-175.000-726.000	SUPPLIES - 45 MONROE STREET	CURRENT OFFICE SOLUTIONS	SUPPLIES - 45 MONROE STREET	2.00	111924
590-175.000-726.000	COPIES/CONTRACT BILLING - NOV 2	CURRENT OFFICE SOLUTIONS	COPIES/CONTRACT BILLING - NOV 2025	88.31	111924
590-175.000-726.000	WATER 45 MONROE ST	RUPERT'S CULLIGAN	WATER 45 MONROE ST	8.25	111970
590-175.000-801.000	MATS - 45 MONROE ST	CINTAS CORPORATION	MATS - 45 MONROE ST	1.25	111920
590-175.000-801.000	COPIES/CONTRACT BILLING - NOV 2	CURRENT OFFICE SOLUTIONS	COPIES/CONTRACT BILLING - NOV 2025	69.06	111924
590-175.000-801.000	PRINTING/POSTAGE AND HANDLING -	DELAWARE SYSTEMS	PRINTING/POSTAGE AND HANDLING - NOV 202	803.23	111925

INVOICE GL DISTRIBUTION REPORT FOR CITY OF HILLSDALE
EXP CHECK RUN DATES 12/11/2025 - 12/11/2025
BOTH JOURNALIZED AND UNJOURNALIZED
PAID

GL Number	Invoice Line Desc	Vendor	Invoice Description	Amount	Check #
Fund 590 SEWER FUND					
Dept 175.000 ADMINISTRATIVE SERVICES					
590-175.000-801.000	BPU BOARD MEETING PER DIEM - DEC	DOUGLAS J. DOBROZSI	BPU BOARD MEETING PER DIEM - DEC 2025	6.25	111926
590-175.000-801.000	BPU CLEANING - OCT 2025	EAST 2 WEST ENTERPRISES, I	BPU CLEANING - NOV 2025	105.00	111928
590-175.000-801.000	BPU BOARD MEETING PER DIEM - DEC	ERIC POTES	BPU BOARD MEETING PER DIEM - DEC 2025	6.25	111929
590-175.000-801.000	BPU BOARD MEETING PER DIEM - DEC	JEREMIAH JASON HODSHIRE	BPU BOARD MEETING PER DIEM - DEC 2025	6.25	111947
590-175.000-801.000	WEB ACCESS/UTILITY EXCHANGE - NO	ONLINE INFORMATION SERVICE	WEB ACCESS/UTILITY EXCHANGE - NOV 2025	22.30	111961
590-175.000-801.000	BPU BOARD MEETING PER DIEM - DEC	PHILIP DAVID MCDOWELL	BPU BOARD MEETING PER DIEM - DEC 2025	6.25	111964
590-175.000-801.000	BPU BOARD MEETING PER DIEM - DEC	STEVEN WELLS	BPU BOARD MEETING PER DIEM - DEC 2025	6.25	111976
590-175.000-801.000	ACCOUNTING SERVICES - OCT 2025	THE WOODHILL GROUP, LLC	ACCOUNTING SERVICES - OCT 2025	1,086.08	111980
590-175.000-801.000	CREDIT CARD PROCESSING FEES - NO	INVOICE CLOUD, INC.	CREDIT CARD PROCESSING FEES - NOV 2025	102.57	682
590-175.000-802.000	KNOWBE4 SECURITY TRAINING 1-26/1	KNOWBE4, INC.	KNOWBE4 SECURITY TRAINING 1-26/1-29	531.77	111951
590-175.000-802.000	NET ADMIN NOV 25	SONIT SYSTEMS, LLC	NET ADMIN NOV 25	234.37	111973
590-175.000-802.000	MILSOFT DISSPATCH LICENSE 12-25	MILSOFT	MILSOFT DISSPATCH LICENSE 12-25	137.81	111988
590-175.000-802.000	IVR POOLED MONTHLY OUTAGE SUB 12	MILSOFT	IVR POOLED MONTHLY OUTAGE SUB 12-25	126.38	111988
590-175.000-850.000	FIBER - 45 MONROE STREET	ACD.NET	FIBER - 45 MONROE STREET	50.00	111908
590-175.000-850.000	TELEPHONE - WWTP 101 W GALLOWAY	ACD.NET	TELEPHONE - WWTP 101 W GALLOWAY	19.47	111908
590-175.000-850.000	OOMA FAXING EQUIP DEC 25	OOMA, INC.	OOMA FAXING EQUIP DEC 25	16.23	111962
590-175.000-850.000	OOMA FAXING EQUIP NOV 25	OOMA, INC.	OOMA FAXING EQUIP NOV 25	16.23	111962
590-175.000-850.000	MONTHLY VERIZON BILL - DEC25	VERIZON WIRELESS	MONTHLY VERIZON BILL - DEC25	143.47	111989
590-175.000-880.000	COMMUNITY PROMOTION - NOV 2025	MCKIBBIN MEDIA GROUP, INC.	COMMUNITY PROMOTION - NOV 2025	62.50	111955
590-175.000-920.000	503214966 - 45 MONROE	MICHIGAN GAS UTILITIES	NATURAL GAS UTILITY - 45 MONROE	117.13	1310
Total For Dept 175.000 ADMINISTRATIVE SERVICES				3,774.66	
Dept 546.000 OPERATIONS					
590-546.000-726.000	OIL AND OIL DRY	FAMILY FARM & HOME	OIL AND OIL DRY	157.94	111931
590-546.000-726.000	GLOVES	FAMILY FARM & HOME	GLOVES	11.98	111931
590-546.000-726.000	GLOVES	FAMILY FARM & HOME	GLOVES	38.96	111931
590-546.000-726.000	COMPOSITE SAMPLER PUMPS	USABBLUEBOOK	COMPOSITE SAMPLER PUMPS	2,927.39	111987
590-546.000-726.000	PORTABLE DO METER	USABBLUEBOOK	PORTABLE DO METER	1,186.59	111987
590-546.000-727.800	SUPPLIES - CHEMICALS	RUPERT'S CULLIGAN	DISTILLED LAB WATER - 101 W GALLOWAY	14.00	111970
590-546.000-727.800	FERROUS CHLORIDE	WATER SOLUTIONS UNLIMITED	FERROUS CHLORIDE	5,411.00	111991
590-546.000-730.000	NEW HOLLAND BACKHOE CYLINDER SEA	BLACK FORKLIFT SALES & SEF	NEW HOLLAND BACKHOE CYLINDER SEAL	897.91	111916
590-546.000-730.000	REPLACE SKID STEER TIRES	NORM'S TIRE & SERVICE	REPLACE SKID STEER TIRES	771.20	111960
590-546.000-740.000	BPU OCT 2025 FUEL	WATKINS TRANSPORT INC	BPU NOV 2025 FUEL	489.40	111993
590-546.000-801.000	LOAD, TRANSPORT, LAND APPLY W FU	BIOTECH AGRONOMICS, INC.	BIOSOLIDS APPLICATION 2ND ROUND 2025	40,901.61	111915
590-546.000-801.000	CONTRACT WASTEWATER LICENSE SERV	JG WASTEWATER SERVICE, LLC	CONTRACT WASTEWATER LICENSE SERVICE	2,500.00	111948
590-546.000-801.000	BOB EVANS MONTHLY	MERIT LABORATORIES	BOB EVANS MONTHLY	3,279.00	111956
590-546.000-801.000	WWTP EFF SULFATE AND CHLORIDE	MERIT LABORATORIES	WWTP EFF SULFATE AND CHLORIDE	53.00	111956
590-546.000-801.000	BIOSOLIDS LAND APPLICATION FEE	STATE OF MICHIGAN EGLE	BIOSOLIDS LAND APPLICATION FEE	2,368.64	111975
590-546.000-801.000	NPDES ANNUAL PERMIT FEE	STATE OF MICHIGAN EGLE	NPDES ANNUAL PERMIT FEE	5,500.00	111975
590-546.000-920.000	504904602 - 101 W GALLOWAY	MICHIGAN GAS UTILITIES	NATURAL GAS UTILITY - 101 W GALLOWAY DF	293.54	1307
590-546.000-920.000	504504154 - 37 MONROE	MICHIGAN GAS UTILITIES	NATURAL GAS UTILITY - 37 MONROE	13.30	1309
590-546.000-920.000	504756735 - W GALLOWAY GR	MICHIGAN GAS UTILITIES	NATURAL GAS UTILITY - W GALLOWAY GR	138.60	1311
590-546.000-920.000	504504154 - 37 MONROE	MICHIGAN GAS UTILITIES	NATURAL GAS UTILITY - 37 MONROE	38.77	1312
590-546.000-920.000	504504154 - 135 BARBER ST	MICHIGAN GAS UTILITIES	NATURAL GAS UTILITY - 135 BARBER DR	51.44	1313
590-546.000-920.000	504904602 - 101 W GALLOWAY	MICHIGAN GAS UTILITIES	NATURAL GAS UTILITY - 101 W GALLOWAY	2,030.56	1314
590-546.000-920.000	505161747 - 101 W GALLOWAY MN	MICHIGAN GAS UTILITIES	NATURAL GAS UTILITY - 101 W GALLOWAY MN	909.20	1315
590-546.000-930.000	SHEER PINS FOR SNOWBLOWER	FAMILY FARM & HOME	SHEER PINS FOR SNOWBLOWER	17.98	111931
590-546.000-930.000	MISC PLUMBING	GELZER HJ & SON INC	MISC PLUMBING	42.98	111934
590-546.000-930.000	MISC PLUMBING	GELZER HJ & SON INC	DIGITAL CALIPERS	41.99	111934
590-546.000-930.000	MISC PLUMBING	GELZER HJ & SON INC	MISC PLUMBING	26.67	111934
590-546.000-930.000	MISC PLUMBING	GELZER HJ & SON INC	MISC PLUMBING	143.15	111934
590-546.000-930.000	DR3900 SERVICE CONTRACT	USABBLUEBOOK	DR3900 SERVICE CONTRACT	961.00	111987

12/11/2025 12:26 PM
User: lsergent
DB: Hillsdale

INVOICE GL DISTRIBUTION REPORT FOR CITY OF HILLSDALE
EXP CHECK RUN DATES 12/11/2025 - 12/11/2025
BOTH JOURNALIZED AND UNJOURNALIZED
PAID

Page: 8/10

GL Number	Invoice Line Desc	Vendor	Invoice Description	Amount	Check #
Fund 590 SEWER FUND					
Dept 546.000 OPERATIONS					
590-546.000-930.980	REPAIRS & MAINT. - SERVICE LINES SERVEPRO OF BRANCH & SOUTH SEWAGE REMEDIATION - 71 & 73 WESTWOOD S			880.26	111972
	Total For Dept 546.000 OPERATIONS			72,098.06	
	Total For Fund 590 SEWER FUND			75,872.72	
Fund 591 WATER FUND					
Dept 000.000					
591-000.000-110.000	METER HORN W/SPUDS - 5/8" X3/4"	ETNA SUPPLY COMPANY	INVENTORY	2,271.25	111930
	Total For Dept 000.000			2,271.25	
Dept 175.000 ADMINISTRATIVE SERVICES					
591-175.000-726.000	SUPPLIES - 45 MONROE STREET	CURRENT OFFICE SOLUTIONS	SUPPLIES - 45 MONROE STREET	1.99	111924
591-175.000-726.000	COPIES/CONTRACT BILLING - NOV 2	CURRENT OFFICE SOLUTIONS	COPIES/CONTRACT BILLING - NOV 2025	88.31	111924
591-175.000-726.000	WATER 45 MONROE ST	RUPERT'S CULLIGAN	WATER 45 MONROE ST	8.25	111970
591-175.000-801.000	MATS - 45 MONROE ST	CINTAS CORPORATION	MATS - 45 MONROE ST	1.25	111920
591-175.000-801.000	COPIES/CONTRACT BILLING - NOV 2	CURRENT OFFICE SOLUTIONS	COPIES/CONTRACT BILLING - NOV 2025	69.06	111924
591-175.000-801.000	PRINTING/POSTAGE AND HANDLING -	DELAWARE SYSTEMS	PRINTING/POSTAGE AND HANDLING - NOV 202	803.23	111925
591-175.000-801.000	BPU BOARD MEETING PER DIEM - DEC	DOUGLAS J. DOBROZSI	BPU BOARD MEETING PER DIEM - DEC 2025	6.25	111926
591-175.000-801.000	BPU CLEANING - OCT 2025	EAST 2 WEST ENTERPRISES, I	BPU CLEANING - NOV 2025	105.00	111928
591-175.000-801.000	BPU BOARD MEETING PER DIEM - DEC	ERIC POTES	BPU BOARD MEETING PER DIEM - DEC 2025	6.25	111929
591-175.000-801.000	BPU BOARD MEETING PER DIEM - DEC	JEREMIAH JASON HODSHIRE	BPU BOARD MEETING PER DIEM - DEC 2025	6.25	111947
591-175.000-801.000	WEB ACCESS/UTILITY EXCHANGE - NO	ONLINE INFORMATION SERVICE	WEB ACCESS/UTILITY EXCHANGE - NOV 2025	22.30	111961
591-175.000-801.000	BPU BOARD MEETING PER DIEM - DEC	PHILIP DAVID MCDOWELL	BPU BOARD MEETING PER DIEM - DEC 2025	6.25	111964
591-175.000-801.000	BPU BOARD MEETING PER DIEM - DEC	STEVEN WELLS	BPU BOARD MEETING PER DIEM - DEC 2025	6.25	111976
591-175.000-801.000	ACCOUNTING SERVICES - OCT 2025	THE WOODHILL GROUP, LLC	ACCOUNTING SERVICES - OCT 2025	1,086.08	111980
591-175.000-801.000	CREDIT CARD PROCESSING FEES - NO	INVOICE CLOUD, INC.	CREDIT CARD PROCESSING FEES - NOV 2025	102.57	682
591-175.000-802.000	KNOWBE4 SECURITY TRAINING 1-26/1	KNOWBE4, INC.	KNOWBE4 SECURITY TRAINING 1-26/1-29	531.77	111951
591-175.000-802.000	NET ADMIN NOV 25	SONIT SYSTEMS, LLC	NET ADMIN NOV 25	234.37	111973
591-175.000-802.000	MILSOFT DISSPATCH LICENSE 12-25	MILSOFT	MILSOFT DISSPATCH LICENSE 12-25	137.81	111988
591-175.000-802.000	IVR POOLED MONTHLY OUTAGE SUB 12	MILSOFT	IVR POOLED MONTHLY OUTAGE SUB 12-25	126.38	111988
591-175.000-850.000	TELEPHONE - WTP 401 HILLSDALE ST	ACD.NET	TELEPHONE - WTP 401 HILLSDALE STREET	19.47	111908
591-175.000-850.000	FIBER - 45 MONROE STREET	ACD.NET	FIBER - 45 MONROE STREET	50.00	111908
591-175.000-850.000	OOMA FAXING EQUIP DEC 25	OOMA, INC.	OOMA FAXING EQUIP DEC 25	16.23	111962
591-175.000-850.000	OOMA FAXING EQUIP NOV 25	OOMA, INC.	OOMA FAXING EQUIP NOV 25	16.23	111962
591-175.000-850.000	MONTHLY VERIZON BILL - DEC25	VERIZON WIRELESS	MONTHLY VERIZON BILL - DEC25	143.47	111989
591-175.000-880.000	COMMUNITY PROMOTION - NOV 2025	MCKIBBIN MEDIA GROUP, INC.	COMMUNITY PROMOTION - NOV 2025	62.50	111955
591-175.000-920.000	503214966 - 45 MONROE	MICHIGAN GAS UTILITIES	NATURAL GAS UTILITY - 45 MONROE	117.13	1310
	Total For Dept 175.000 ADMINISTRATIVE SERVICES			3,774.65	
Dept 543.000 OPERATIONS					
591-543.000-726.000	SECURITY SIGNS	FAMILY FARM & HOME	SECURITY SIGNS	11.98	111931
591-543.000-726.000	SUPPLIES	IDEXX LABORATORIES	BACTEROLOGICAL BOTTLES	301.48	111945
591-543.000-727.800	SODIUM HYPOCHLORITE	UNIVAR SOLUTIONS USA INC	SODIUM HYPOCHLORITE	3,339.59	111986
591-543.000-740.000	BPU OCT 2025 FUEL	WATKINS TRANSPORT INC	BPU NOV 2025 FUEL	489.41	111993
591-543.000-801.000	POSTAGE FOR TESTING	HILLSDALE MARKET HOUSE, IN	POSTAGE FOR TESTING	20.24	111941
591-543.000-801.000	CCC PROGRAM SERVICE	HYDROCORP, LLC	CCC PROGRAM SERVICE	1,462.50	111944
591-543.000-801.588	ENGINEERING SERVICES BPU WATER	THE MANNIK & SMITH GROUP,	MANNIK & SMITH ENGINEERING SERVICES 202	104.50	111979
591-543.000-920.000	504558065 - 401 HILLSDALE	MICHIGAN GAS UTILITIES	NATURAL GAS UTILITY - 401 HILLSDALE	380.08	1308
591-543.000-920.000	504504154 - 37 MONROE	MICHIGAN GAS UTILITIES	NATURAL GAS UTILITY - 37 MONROE	13.30	1309
591-543.000-920.000	504504154 - 37 MONROE	MICHIGAN GAS UTILITIES	NATURAL GAS UTILITY - 37 MONROE	38.77	1312
591-543.000-930.000	PHOTO EYE AND SHIELDS	FAMILY FARM & HOME	PHOTO EYE AND SHIELDS	43.97	111931
591-543.000-930.000	PUMP REPAIR KIT	USABLUBOOK	PUMP REPAIR KIT	210.70	111987
591-543.000-930.990	CONTRACTED LSL REPLACEMENTS	RJT CONSTRUCTION CO.	FYE 2026 LEAD SERVICE LINE REPLACEMENTS	5,830.00	111968

12/11/2025 12:26 PM
User: lsergent
DB: Hillsdale

INVOICE GL DISTRIBUTION REPORT FOR CITY OF HILLSDALE
EXP CHECK RUN DATES 12/11/2025 - 12/11/2025
BOTH JOURNALIZED AND UNJOURNALIZED
PAID

Page: 9/10

GL Number	Invoice Line Desc	Vendor	Invoice Description	Amount	Check #
Fund 591 WATER FUND					
Dept 543.000 OPERATIONS					
Total For Dept 543.000 OPERATIONS				12,246.52	
Dept 900.000 CAPITAL OUTLAY					
591-900.000-970.000-215055	PVC FOR WELLS GENERATOR	AMERICAN COPPER AND BRASS,PVC FOR WELLS GENERATOR		3,574.10	111910
591-900.000-970.000-215055	RETURN: PVC FOR WELLS GENERATOR	AMERICAN COPPER AND BRASS,RETURN: PVC FOR WELLS GENERATOR		(1,426.00)	111910
Total For Dept 900.000 CAPITAL OUTLAY				2,148.10	
Total For Fund 591 WATER FUND				20,440.52	
Fund 633 PUBLIC SERVICES INV. FUND					
Dept 000.000					
633-000.000-101.000	GRAVEL - 22A	DRY MAR TRUCKING & DIRTWO	15 YARDS 22A	435.00	111927
633-000.000-101.000	CALCIUM CHLORIDE 50LB BAGS	HOME DEPOT	50 BAGS CALCIUM CHLORIDE PELLETS	1,999.00	111943
633-000.000-101.000	ICE MELT - COATED WITH CALCIUM C	HOME DEPOT	99 BAGS ICE MELT - COATED	1,343.57	111943
633-000.000-101.000	COLD PATCH	UNIQUE PAVING MATERIALS CC	25.32 T COLD PATCH	3,432.13	111985
Total For Dept 000.000				7,209.70	
Total For Fund 633 PUBLIC SERVICES INV. FUND				7,209.70	
Fund 640 REVOLVING MOBILE EQUIP. FUND					
Dept 443.000 MOBILE EQUIPMENT MAINTENANCE					
640-443.000-726.000	RAGS, FENDER SKIRT	CINTAS CORPORATION	MATS, RAGS, FENDER SKIRT, MOP	9.54	111920
640-443.000-726.000	CIRCUIT TESTER	PERFORMANCE AUTOMOTIVE	CIRCUIT TESTER	16.19	111963
640-443.000-726.000	ACETYLENE, GAS	PURITY CYLINDER GASES, INC	ACETYLENE, GAS	79.61	111966
640-443.000-726.000	PRY BAR SET	TSC STORES	PRY BAR SET	29.99	111984
640-443.000-730.000	HINGE KIT - #154	GREENMARK EQUIPMENT	HINGE KIT - #154	124.99	111936
640-443.000-730.000	BATTERY - #12	PERFORMANCE AUTOMOTIVE	BATTERY - #12	167.99	111963
640-443.000-730.000	BOOT KIT, FLUID FILM - BPU F250	PERFORMANCE AUTOMOTIVE	BOOT KIT, FLUID FILM - BPU F250	19.68	111963
640-443.000-730.000	PADS, ROTOR, HUB, PIN - BPU F25	PERFORMANCE AUTOMOTIVE	PADS, ROTOR, HUB, PIN - BPU F250	469.11	111963
640-443.000-740.000	10 GAL OIL	WATKINS OIL COMPANY, INC.	10 GAL OIL	111.50	111992
640-443.000-740.000	NOVEMBER FUEL - DPS	WATKINS TRANSPORT INC	NOVEMBER FUEL - DPS	2,875.48	111993
640-443.000-801.000	ELECTRICAL REPAIRS - #43	STOOPS FREIGHTLINER-QUALIT	ELECTRICAL REPAIRS - #43	1,606.00	111978
Total For Dept 443.000 MOBILE EQUIPMENT MAINTENANCE				5,510.08	
Total For Fund 640 REVOLVING MOBILE EQUIP. FUND				5,510.08	

GL Number	Invoice Line Desc	Vendor	Invoice Description	Amount	Check #
Fund Totals:					
			Fund 101 GENERAL FUND	51,140.46	
			Fund 202 MAJOR ST./TRUNK	9,108.74	
			Fund 203 LOCAL STREET F	1,303.75	
			Fund 204 MUNICIPAL STRE	747.50	
			Fund 247 TAX INCREMENT I	326.78	
			Fund 271 LIBRARY FUND	2,732.83	
			Fund 481 AIRPORT IMPROV	34,508.51	
			Fund 582 ELECTRIC FUND	66,275.75	
			Fund 588 DIAL A RIDE	1,685.14	
			Fund 590 SEWER FUND	75,872.72	
			Fund 591 WATER FUND	20,440.52	
			Fund 633 PUBLIC SERVICE	7,209.70	
			Fund 640 REVOLVING MOBIL	5,510.08	
Total For All Funds:				276,862.48	

CITY COUNCIL MINUTES

City of Hillsdale
December 8, 2025
7:00 P.M.

Committee of the Whole Meeting

Call to Order and Pledge of Allegiance

Mayor Scott Sessions opened the meeting with the Pledge of Allegiance

Roll Call

Mayor Sessions called the meeting to order. Clerk Price took roll call.

Council Members present:

Scott Sessions, Mayor
R Greg Stuchell, Ward 1
Jacob Bruns, Ward 1
William Morrissey, Ward 2
Matthew Bentley, Ward 2

Bob Flynn, Ward 3
Robert Socha, Ward 4
Joshua Paladino, Ward 4

Council Members absent:

Gary Wolfram, Ward 3

Also Present: David Mackie (City Manager), Katy Price (City Clerk), Jason Blake (DPS Director), Brandon Janes (IT), Sam Fry (Assistant City Manager), Kim Thomas (City Assessor), Karen Lancaster (Finance via electronically), Penny Swan, Jill Hardway, Jonathan Meckel, CJ Toncray, Evert Henes, Andrew Gelzer, Eric Coykendall.

Special Presentations

A. Road Funding Presentation

City Staff reviewed the funding options, gave an overview of the City's street and current condition, explained the scale of the infrastructure challenge and outline the long term strategy needed to sustain progress over the coming years.

Staff that presented include: Jason Blake- DPS Director, Rob Stiverson- City Engineer, David Mackie- City Manager, Sam Fry- Assistant City Manager, Kim Thomas- Assessor.

Hillsdale Street Network is comprised of 44 centerline miles of road. Street classifications are 20 miles- Major Streets, 24 miles- Local Streets, 3 miles- MDOT Trunklines.

Staff reviewed the PASER ratings and evaluation on the City's streets, 1-10 rating scale. 2025 PASER rating report from City rate 10.88 miles in good condition, 7.53 miles in fair condition and 25.28 miles in poor condition.

Staff reported why street reconstruction is expensive. Most of the projects require more than asphalt usually includes- curb and gutter, sidewalk repair, ADA compliant handicap ramp installation, storm

sewer and drainage structure installation or upgrades and subgrade repair for poor soils. The City looking ahead anticipated 2026 projects to cost on average \$3.5 million per mile. With the poor conditioned streets presented it would cost in total \$38.5 million to repair these roads in the City.

Street reconstruction is funded through state funding, federal funding, special financing tools and taxes.

When property taxes are paid to the local unit 51% goes to education, 13.9% to Hillsdale County, 34.6% to the City of Hillsdale. The City portion breaks down the 34.6% to: 20.5% City operating millage, 9.9% City Street millage, 1.7% City Public Safety, 1.6% City Library millage, .8% City Leaf Collection millage.

Street funding constraints for the City include 1/3 of total property value is exempt from ad valorem property taxes with nonprofit and tax exempt institutions. The state of Michigan does not have a local option of fuel tax, sales tax and no vehicle property tax.

Discussion ensued on how to potentially fund streets. Grants, millage increase, income tax, discretionary general fund allocation, spending down fund balances, HCCF endowment, neighborhood road funds, special assessments, public safety pension fund millage etc.

No single funding source is sufficient on its own but together the funding tools allow the City to continue to make measurable progress each year.

Council Discussion

Council discussed Act 345, Public Safety millage, City income tax, special assessments, grants, neighborhood road funds, and other funding tools.

General Public Comments From:

Jeff Fezakas, Jill Hardway, Jonathan Meckel, David Hambleton, Tim Pollele, Joshua Waechter, CJ Toncray, Eric Coykendall, Evert Henes, Jonah Apel, Matthew Kniffin.

Staff and Council answered questions from residents.

Discussion about motions in a Committee of the Whole meeting.

Motion by Councilmember Bentley, seconded by Councilmember Paladino to refer to full council that the 2026 special assessments for Oak Street and South Street have a maximum residential cap of \$2800.

Roll Call:

Councilman Flynn	Nay
Councilman Morrissey	Nay
Councilman Paladino	Nay
Councilman Socha	Nay
Councilman Stuchell	Nay

Mayor Sessions	Nay
Councilman Bentley	Aye
Councilman Bruns	Nay

Motion failed 1-7

Adjournment

Motion by Councilmember Bentley, seconded by Councilmember Morrissey to adjourn the meeting.

By a voice vote, the motion passed unanimously.

The meeting Adjourned at 9:13 p.m.

Scott Sessions, Mayor

Katy Price, City Clerk

CITY COUNCIL MINUTES

City of Hillsdale
December 15, 2025
7:00 P.M.

Regular Meeting

Call to Order and Pledge of Allegiance

Mayor Scott Sessions opened the meeting with the Pledge of Allegiance.

Roll Call

Mayor Sessions called the meeting to order. Clerk Price took roll call.

Council Members present:	Scott Sessions, Mayor R Greg Stuchell, Ward 1 Jacob Bruns, Ward 1 William Morrissey, Ward 2 Matthew Bentley, Ward 2 Gary Wolfram, Ward 3 Bob Flynn, Ward 3 Robert Socha, Ward 4 Joshua Paladino, Ward 4
--------------------------	---

Council Members absent:	None
-------------------------	------

Also Present: David Mackie (City Manager), Attorney Tom Thompson, Katy Price (City Clerk), Jason Blake (DPS Director), Mark Hawkins (HCFD), Brandon Janes (IT), Doug Ingles, Sheri Ingles, Mark Nichols, Brant Cohen, Felicia Finch, Aidan Sullivan.

Approval of Agenda

Motion by Councilman Morrissey, support by Councilman Flynn, to approve the agenda as presented.

All ayes. Motion carried.

Public Comment from:

Lance Lashaway, Felicia Finch- Hillsdale Twp.

Consent Agenda

- A. Approval of Bills
 - 1. City and BPU Claims of November 26, 2025: \$945,331.49
 - 2. Payroll of December 4, 2025: \$215,525.48
- B. City Council Minutes of December 15, 2025
- C. Finance Minutes of December 15, 2025
- D. Cemetery Minutes of November 12, 2025
- E. LAC Minutes of December 10, 2025 & DART Accessibility Plan
- F. 2026 Committee Meeting Dates

Council discussion on Finance and Council minutes of December 15th should be December 1st.

Motion by Councilman Morrissey, support by Councilman Socha, to approve the agenda as amended with the above changes.

Roll Call:

Councilman Bruns	Aye
Councilman Flynn	Aye
Councilman Morrissey	Aye
Councilman Paladino	Aye

Councilman Socha	Aye
Councilman Stuchell	Aye
Councilman Wolfram	Aye
Mayor Sessions	Aye
Councilman Bentley	Aye

Motion passed 9-0

Communication/Petitions

A. Hillsdale County Commissioner Update – Doug Ingles

Doug Ingles, County Commissioner, gave a brief update on the County.

Introduction and Adoption of Ordinances/Public Hearings

A. Public Hearing – Hillsdale’s Energy Waste Reduction (EWR) Plan

David Mackie, City Manager/BPU Director stated the State of Michigan adopted a very aggressive Energy Waste Reduction (EWR) law in late 2023. The BPU’s staff has been working with Michigan Municipal Electric Association (MMEA) and American Municipal Power (AMP) over the last year to develop a plan that meets the EWR requirements at the least cost to our customers. The City’s Plan would collectively cost our customers about 2.5 percent. After the Public Hearing on December 1st the City Council requested staff attempt to update the Plan to charge all customers by their kwh usage. The purposed plan showed the examples of residential and commercial usages and charges.

Mayor Sessions opened podium at 7:17p.m.

No public comment, Mayor Sessions closed podium at 7:17 p.m.

Lengthy Council discussion ensued on laws, flat rate for residential and percentage usage for commercial, administrative costs, fines and penalties if not in compliance with the state.

Motion by Council Member Flynn, seconded by Council Member Wolfram to approve the BPU EWR Plan and submit to the State of Michigan as presented.

Roll Call:

Councilman Flynn	Aye
Councilman Morrisey	Aye
Councilman Paladino	Nay
Councilman Socha	Nay
Councilman Stuchell	Aye
Councilman Wolfram	Aye
Mayor Sessions	Aye
Councilman Bentley	Nay
Councilman Bruns	Nay

Motion passed 5-4

Old Business

A. Keefer House Hotel LLC OPRA Resolution Amendment

Keefer House Hotel, LLC requested an additional extension of the completion date to June 30, 2026. The amendment would ensure the State Tax Commission does not revoke the OPRA certificate while the project remains ongoing, as OPRA’s are subject to State Tax Commission review after being approved at the local level.

Brant Cohen, CL Real Estate, reviewed the progress made at the hotel and further plans moving forward.

Motion by Council Member Morrisey, seconded by Council Member Socha to approve the extension for the OPRA Keefer House Hotel LLC as presented. **Resolution #3660.**

Roll Call:

Councilman Morrisey	Aye
Mayor Pro Tem Paladino	Aye
Councilman Socha	Aye
Councilman Stuchell	Aye
Councilman Wolfram	Aye
Mayor Sessions	Nay
Councilman Bentley	Nay
Councilman Bruns	Nay
Councilman Flynn	Aye

Motion passed 6-3

New Business

A. Resolution Establishing Guidelines for Poverty Exemption from Property Taxes

Council discussed they would like have the resolution come before them to discuss the guideline and resolution every year. Council amended the resolution to reflect the change.

Motion by Council Member Socha, seconded by Council Member Flynn to amend the resolution to remove “All income and asset limits shall be adjusted for each year based on the updated federal poverty guidelines as published annually in the prior year by the State Tax Commission.

Roll Call:

Mayor Pro Tem Paladino	Aye
Councilman Socha	Aye
Councilman Stuchell	Aye
Councilman Wolfram	Aye
Mayor Sessions	Aye
Councilman Bentley	Aye
Councilman Bruns	Aye
Councilman Flynn	Aye
Councilman Morrisey	Aye

Motion passed 9-0

Motion by Council Member Socha, seconded by Council Member Flynn to approve the resolution as amended. **Resolution #3661.**

Roll Call:

Councilman Socha	Aye
Councilman Stuchell	Aye
Councilman Wolfram	Aye
Mayor Sessions	Aye
Councilman Bentley	Aye
Councilman Bruns	Aye
Councilman Flynn	Aye
Councilman Morrisey	Aye
Councilman Flynn	Aye

Motion passed 9-0

B. Hillsdale Substation New Pole Location Change Order

Kent Power was asked by the BPU to quote the proposed change order to better utilize the substation more effectively and safely. The substation is an asset that should last the BPU for over 50 years. The new pole location change order totals \$354,883 with an additional \$17,494 in previous change orders for necessary work. The request was for a combined \$372,327 in change orders.

Motion by Council Member Morrisey, seconded by Council Member Socha to approve the Substation change order in the amount of \$372,327.00.

Roll Call:

Councilman Stuchell	Aye
Councilman Wolfram	Aye
Mayor Sessions	Aye
Councilman Bentley	Aye
Councilman Bruns	Aye
Councilman Flynn	Aye
Councilman Morrisey	Aye
Mayor Pro Tem Paladino	Aye
Councilman Socha	Aye

Motion passed 9-0

C. Dial-A-Ride Annual Funding Resolution

Each February the City of Hillsdale submits an application to the State of Michigan Department of Transportation (MDOT) to apply for financial assistance under Act 51 for public transportation known as Dial-A-Ride Transit (DART). The Resolution of Intent required by MDOT as part of the application process. The resolution outlines the anticipated balanced budget for the 2026-2027 fiscal year of \$411,467.00 and projected funding sources. This budget is similar but not necessarily identical to the budget Council will approve in June as it covers a different fiscal year (October 1, 2026-September 30, 2027). It is anticipated that we will receive 18.0% of operational costs from federal sources and 33.1804% from the state. The remaining 48.8196% will come from local sources (ticket fares and general fund). The resolution also appoints Jason Blake, Public Services Director, as the Transportation Coordinator.

Motion by Council Member Morrisey, seconded by Council Member Flynn to approve the MDOT Dial-A-Ride Annual Funding Resolution as presented. **Resolution #3662.**

Roll Call:

Councilman Wolfram	Aye
Mayor Sessions	Aye
Councilman Bentley	Aye
Councilman Bruns	Aye
Councilman Flynn	Aye
Councilman Morrisey	Aye
Mayor Pro Tem Paladino	Aye
Councilman Socha	Aye
Councilman Stuchell	Aye

Motion passed 9-0

D. Proposed Special Assessment District 2026-1, Rescinding Resolution #3659- Cancel Public Hearing on January 5, 2025

Sam Fry, Assistant City Manager, reported during the December 1, 2025 regularly scheduled council meeting, Council approved plans, specifications and drawings for SAD 2026-1, Arch Ave. Street Reconstruction Project and set a public hearing date of January 5, 2026 for consideration to establish the 2026-1 District. On December 3, 2025 City Staff received notice from the Michigan Department of Transportation that the City had been awarded a Transportation Economic Development Category F Grant (TEDF F) for the resurfacing of Industrial Drive. The Grant award is in the amount of \$375,000 with a 42% local match and will be funded for FY27. With the Congressional appropriation for a reconstruction project on Arch Ave. in addition to the currently awarded TEDF F Grant on Industrial Dr., City staff recommended the projects be sent out for bid as one project in an effort to layer grant funding and obtain lower unit pricing.

The City Manager and Director of Public Services recommend the following streets for inclusion in the proposed SAD for street rehabilitation projects and potential associated utility work during the 2026 construction season:

Proposed SAD 2026-1: Arch Ave. (.33 mi): Mechanic Rd to W. Carleton Rd (M99)

Industrial Drive. (.62 mi): Mechanic Rd to Beck Rd.

Proctor Dr. (.075 mi): Industrial Dr. to dead-end cul de sac

Lengthy council discussion followed on the additional areas of the proposed SAD 2026-1, grant funding and the Special Assessment District Policy.

Motion by Council Member Bentley, seconded by Council Member Morrissey to rescind the resolution 3659 of necessity, cancelling the public hearing on January 5, 2025 and direct the City Engineer to prepare plans, specifications, and cost estimates for the above listed project areas pursuant to City Ordinance Article V, Division 3, Section 2-333, and submit to Council no later than the first regular meeting of January 2026 for consideration of establishment of a Special Assessment District. **Resolution #3663.**

Roll Call:

Mayor Sessions	Aye
Councilman Bentley	Aye
Councilman Bruns	Aye
Councilman Flynn	Aye
Councilman Morrissey	Aye
Mayor Pro Tem Paladino	Aye
Councilman Socha	Aye
Councilman Stuchell	Aye
Councilman Wolfram	Aye

Motion passed 9-0

E. Special Assessment District Discussion

Sam Fry, Assistant City Manager reviewed a flow chart of process for establishing a special assessment district, which includes project, established plans, costs, public hearing, notices, petitions in favor or not, prepare assessment roll, 2nd public hearing, notices, confirm special assessment roll, etc.

No action taken.

Miscellaneous Reports

- A. Proclamations – None
- B. Appointment- None
- C. Other - None

General Public Comment

None

City Manager Report

Reviewed the City Manager report in the packet. Happy Holidays.

Council Comment

Councilman Flynn thanked everyone involved for the Light up Parade. Thanked Mr. Walters and others for the “Light up the Courthouse Square” for the season. (Trees wrapped with lights with business and organizations support). Flynn stated it looked great downtown and would like to see more participation from businesses and organizations to help with events and other items within the City.

Councilman Bentley asked about Council rules and procedures and Roberts Rules of Law.

Mayor Sessions, Merry Christmas and Happy New Year!

Adjournment

Motion by Councilman Flynn, seconded by Councilman Socha to adjourn the meeting.

The meeting Adjourned at 9:32 p.m.

Scott M. Sessions, Mayor

Katy Price, City Clerk

View meeting online: [City Council Meeting December 15th, 2025 - YouTube](#)

CITY OF HILLSDALE FINANCE COMMITTEE

Place: City Hall Second Floor Conference Room

Date: December 15, 2025

Time: 6:30 PM

PRESENT:

COMMITTEE: Will Morrissey, Gary Wolfram, Matt Bentley, Jacob Bruns

STAFF: Jason Blake (Director of Public Services), David Mackie (City Manager),

PUBLIC: None

BOARD OF PUBLIC UTILITIES AND CITY OF HILLSDALE ACCOUNTS PAYABLE

INVOICE GL DISTRIBUTION REPORT FOR CITY OF HILLSDALE

Questions asked on Invoice Distribution Report by Finance Committee:

Fund 101

Department 000: Archives of what city posts on social media incoming and outgoing

Department 175: Archives of what city posts on social media incoming and outgoing

Department 595: Belt for tractor at airport

Fund 582

Department 544: National Pollutant Discharge Elimination System permit to discharge into water system
: Pump for engine at power plant

Fund 591

Department 000: Water meter components for inventory

Department 543: Backflow prevention testing

Motioned by Morrissey and seconded by Bruns to approve

Motioned passed 4-0

Motioned by Morrissey and seconded by Bruns to adjourn

Motion passed 4-0

Adjournment 6:41 PM

Minutes prepared by Gary Wolfram



Board of Review Minutes – December Meeting – *per* [MCL 211.53b](#)

When: Tuesday, December 9, 2025
9:00 a.m.

Where: Hillsdale City Hall
2nd Floor Conference Room
97 N Broad St
Hillsdale, MI 49242

Call to Order and Pledge of Allegiance – 9:00 A.M. by Chair Laycock.

Roll Call by Secretary Jaeger:

D. Kerry Laycock – Chair - Present

Becki Jaeger – Secretary - Present

Vacant-Regular Member

Vacant-Alternate

Vacant-Alternate

Kimberly Thomas, MAAO - Assessor (Advisory Only – Not a voting member) - Present

Approval of Agenda – Motion to approve by Jaeger

Public Comment on Agenda Items:

Consent Agenda –

[March 2025 Board of Review Minutes](#)

[2025 STC Bulletins](#)

Communications & Petitions:

Kevin Loveless Petition D25-001, appeared in person to submit his exemption request. Petitions D25-002 thru D25-011 were submitted in writing to the assessor for verification prior to the meeting.

Form 4031 *July/December Board of Review Affidavit* is attached documenting approved changes, if any, for each petition. In addition, Form L-4035a *Taxable Value Calculations Worksheet* has been completed and is attached for any changes to taxable value. Any other letters or proof submitted has also been attached for each petition. These attachments are to be made a part of the complete minutes.

Old Business – none.

Board of Review Minutes –December Meeting – *per* MCL 211.53b

New Business (not including petitions) –

- a. Property Exemptions Guidelines-review draft updated resolution

Assessor Report:

- a. MTT Appeals
 - i. 25-000552-TT Chase Residence LLC
 - ii. 25-002640-TT Mark & Miranda Parker

STC Appeals

154-(pending) MUVIQ USA LLC

General Public Comment – none.

Meeting Recessed 9:45 a.m. by Secretary Jaeger.

The next meeting of the City of Hillsdale Board of Review is tentatively scheduled for Tuesday, March 3, 2026 at 9:00 a.m.

Respectfully Submitted,



Becki Jaeger, Secretary

For summary minutes, the 2025 Dec. BOR Change Summary report signed by the Board of Review may be attached in place of the petition affidavits and attachments.

Year Parcel Number Comments	Petition /Docket	Class	School	Assessed Value	Taxable Value	PRE/MBT Transfer	Corrected			Corrected		
							Assessed Value	Taxable Value	PRE/MBT EX	Corrected Value	Taxable Value	Transfer
2025 006-016-400-21 OWNED BY FEDERALLY FUNDED HEALTH AGENCY AS OF 12/31/2024, SHOULD STILL BE EXEMPT FOR 2025. NEW OWNER IS ALSO TAX EXEMPT COMMUNITY MENTAL HEALTH AGENCY IN PROCESS OF CONSTRUCTING A NEW FACILITY ON THE PROPERTY.	D25-002	202	30020	16,800	16,800	0.000	0	0	0.000	0.000	0.000	0.000
2025 006-016-400-22 OWNED BY FEDERALLY FUNDED HEALTH AGENCY AS OF 12/31/2024, SHOULD STILL BE EXEMPT FOR 2025. NEW OWNER IS ALSO TAX EXEMPT COMMUNITY MENTAL HEALTH AGENCY IN PROCESS OF CONSTRUCTING A NEW FACILITY ON THE ADJACENT PROPERTY.	D25-003	202	30020	40,800	40,800	0.000	0	0	0.000	0.000	0.000	0.000
2025 006-123-352-07 POVERTY EXEMPTION GRANTED AT 100%	D25-001	401	30020	64,500	34,807	100.000	64,500	0	100.000	0.000	0.000	0.000
2025 006-126-180-04 POVERTY EXEMPTION GRANTED AT 75% REDUCTION FOR 2025	D25-004	401	30020	63,900	36,045	100.000	63,900	9,011	100.000	0.000	0.000	0.000
2025 006-900-100-33 DUPLICATE ASSESSMENT - FILED 5076 SMALL BUSINESS EXEMPTION UNDER PARCEL 006-900-006-75	D25-005	003	30020	90,000	90,000	100.000	0	0	100.000	0.000	0.000	0.000
2025 006-900-159-01 SUBMITTED AMENDED PERSONAL PROPERTY STATEMENT	D25-006	251	30020	90,000	90,000	100.000	9,300	9,300	100.000	0.000	0.000	0.000
2025 006-900-300-01 INVENTORY ONLY	D25-007	003	30020	90,000	90,000	100.000	0	0	100.000	0.000	0.000	0.000
2024 006-900-369-00 PPS FILED AFTER CLOSE OF 2024 MBOR	D25-008	251	30020	90,000	90,000	100.000	2,300	2,300	100.000	0.000	0.000	0.000
2025 006-900-442-00 AMENDED PERSONAL PROPERTY STATEMENT	D25-009	251	30020	90,000	90,000	100.000	11,500	11,500	100.000	0.000	0.000	0.000
2025 006-900-464-00 2024 006-900-464-00 AMENDED PERSONAL PROPERTY STATEMENT FILED 9/23/2025	D25-011 D25-010	251 251	30020 30020	90,000 90,000	90,000 90,000	100.000 100.000	400 400	400 400	100.000 100.000	0.000 0.000	0.000 0.000	0.000 0.000

Year Parcel Number Comments	Petition /Docket	Class	School	Assessed Value	Taxable Value	PRE/MBT Transfer	Corrected Assessed Value	Corrected Taxable Value	Corrected PRE/MBT EX Transfer
--------------------------------	---------------------	-------	--------	-------------------	------------------	---------------------	--------------------------------	-------------------------------	-------------------------------------

*Winter PRE Change

THE BOARD OF REVIEW OF CITY OF HILLSDALE, HILLSDALE COUNTY, MICHIGAN HEREBY AFFIRMS THAT THE ABOVE INFORMATION IS CORRECT TO THE BEST OF OUR KNOWLEDGE

Signatures of Board of Review Members

Member  Member  Member _____

Dated 12.9.25

ADJUSTMENT REPORT
BLOCK: DEC BOR: TAXABLE VAL - DEC BOR: TAXABLE VAL, INDEX: ADJUSTMENT INFO
SPEC. POPULATION: AD VALOREM+SPECIAL ACTS
REAL & PERSONAL PROPERTY
ALL ADJUSTMENTS AS OF: 12/09/2025 THROUGH: 12/09/2025
FILTER ADJUSTMENT TYPES BY: DBOR
SUMMER/WINTER SEASONS

-----ALL PARCELS IN 30020: (NET CHANGE)-----

BAL. AS OF 12/09/25	9 PARCELS									COUNTY	RSC/FCLS	WIN PRE	FINAL	DIFF
	JULY BOR	DEC BOR	TRIBUNAL	STC	TREASURY	SPLIT	OTHER	ASSESSOR						
TAXABLE	578,452	0	0	0	0	0	0	0	0	0	0	0	30,211	-548,241
SEV	636,000	0	0	0	0	0	0	0	0	0	0	0	149,600	-486,400
PRE/MBT TAXABLE	520,852	0	0	0	0	0	0	0	0	0	0	0	30,211	-490,641
NON PRE/MBT TAXABLE	57,600	0	0	0	0	0	0	0	0	0	0	0	0	-57,600
(S) CITY OPERATING	6,798.21	0.00	0.00	0.00	0.00	0.00	0.00	0.00	0.00	0.00	0.00	0.00	355.04	-6,443.17
(S) CITY STREETS	1,359.55	0.00	0.00	0.00	0.00	0.00	0.00	0.00	0.00	0.00	0.00	0.00	70.98	-1,288.57
(S) CITY SINK FUND	0.00	0.00	0.00	0.00	0.00	0.00	0.00	0.00	0.00	0.00	0.00	0.00	0.00	0.00
(S) CITY PUBLIC SFTY	546.68	0.00	0.00	0.00	0.00	0.00	0.00	0.00	0.00	0.00	0.00	0.00	28.53	-518.15
(S) CITY 2021 STREET	1,928.67	0.00	0.00	0.00	0.00	0.00	0.00	0.00	0.00	0.00	0.00	0.00	100.71	-1,827.96
(S) CITY 2021 LEAF	275.46	0.00	0.00	0.00	0.00	0.00	0.00	0.00	0.00	0.00	0.00	0.00	14.37	-261.09
(S) LIBRARY	543.74	0.00	0.00	0.00	0.00	0.00	0.00	0.00	0.00	0.00	0.00	0.00	28.39	-515.35
(S) COUNTY ALLOCATED	2,780.81	0.00	0.00	0.00	0.00	0.00	0.00	0.00	0.00	0.00	0.00	0.00	145.21	-2,635.60
(S) STATE EDUC TAX	3,470.71	0.00	0.00	0.00	0.00	0.00	0.00	0.00	0.00	0.00	0.00	0.00	181.26	-3,289.45
(S) SCHOOL OPERATING	1,562.32	0.00	0.00	0.00	0.00	0.00	0.00	0.00	0.00	0.00	0.00	0.00	50.80	-1,511.52
(S) SCHOOL BLDG/SITE	618.55	0.00	0.00	0.00	0.00	0.00	0.00	0.00	0.00	0.00	0.00	0.00	32.28	-586.27
(S) HILLSDALE ISD	75.31	0.00	0.00	0.00	0.00	0.00	0.00	0.00	0.00	0.00	0.00	0.00	3.92	-71.39
(S) HILLSDALE SPC ED	845.81	0.00	0.00	0.00	0.00	0.00	0.00	0.00	0.00	0.00	0.00	0.00	44.15	-801.66
(S) HILLSDALE VOC ED	422.91	0.00	0.00	0.00	0.00	0.00	0.00	0.00	0.00	0.00	0.00	0.00	22.07	-400.84
(S) SCHOOL OPER FC	0.00	0.00	0.00	0.00	0.00	0.00	0.00	0.00	0.00	0.00	0.00	0.00	0.00	0.00
(W) CO MCF OPERATING	343.58	0.00	0.00	0.00	0.00	0.00	0.00	0.00	0.00	0.00	0.00	0.00	17.93	-325.65
(W) CO SENIOR SVCS	571.95	0.00	0.00	0.00	0.00	0.00	0.00	0.00	0.00	0.00	0.00	0.00	29.86	-542.09
(W) CO AMBULANCE	572.65	0.00	0.00	0.00	0.00	0.00	0.00	0.00	0.00	0.00	0.00	0.00	29.89	-542.76
(W) CO MENTAL HEALTH	280.54	0.00	0.00	0.00	0.00	0.00	0.00	0.00	0.00	0.00	0.00	0.00	14.64	-265.90
(W) CO MCF DEBT	128.97	0.00	0.00	0.00	0.00	0.00	0.00	0.00	0.00	0.00	0.00	0.00	6.71	-122.26
(W) CO P S COMM DEBT	573.23	0.00	0.00	0.00	0.00	0.00	0.00	0.00	0.00	0.00	0.00	0.00	29.91	-543.32
(W) SCHOOL OPERATING	1,562.32	0.00	0.00	0.00	0.00	0.00	0.00	0.00	0.00	0.00	0.00	0.00	50.80	-1,511.52
(W) SCHOOL BLDG/SITE	618.48	0.00	0.00	0.00	0.00	0.00	0.00	0.00	0.00	0.00	0.00	0.00	32.28	-586.20
(W) HILLSDALE ISD	75.31	0.00	0.00	0.00	0.00	0.00	0.00	0.00	0.00	0.00	0.00	0.00	3.92	-71.39
(W) HILLSDALE SPC ED	846.00	0.00	0.00	0.00	0.00	0.00	0.00	0.00	0.00	0.00	0.00	0.00	44.16	-801.84
(W) HILLSDALE VOC ED	422.91	0.00	0.00	0.00	0.00	0.00	0.00	0.00	0.00	0.00	0.00	0.00	22.07	-400.84
(W) SCHOOL OPER FC	0.00	0.00	0.00	0.00	0.00	0.00	0.00	0.00	0.00	0.00	0.00	0.00	0.00	0.00
(S) TOTAL SPECLS	0.00	0.00	0.00	0.00	0.00	0.00	0.00	0.00	0.00	0.00	0.00	0.00	0.00	0.00
(W) TOTAL SPECLS	0.00	0.00	0.00	0.00	0.00	0.00	0.00	0.00	0.00	0.00	0.00	0.00	0.00	0.00
(S) ADMIN FEE	212.30	0.00	0.00	0.00	0.00	0.00	0.00	0.00	0.00	0.00	0.00	0.00	10.77	-201.53
(W) ADMIN FEE	59.98	0.00	0.00	0.00	0.00	0.00	0.00	0.00	0.00	0.00	0.00	0.00	2.83	-57.15
(S) TOTAL TAXES	21,441.03	0.00	0.00	0.00	0.00	0.00	0.00	0.00	0.00	0.00	0.00	0.00	1,088.48	-20,352.55
(W) TOTAL TAXES	6,055.92	0.00	0.00	0.00	0.00	0.00	0.00	0.00	0.00	0.00	0.00	0.00	285.00	-5,770.92
(*) TOTAL TAXES	27,496.95	0.00	0.00	0.00	0.00	0.00	0.00	0.00	0.00	0.00	0.00	0.00	1,373.48	-26,123.47



2026 CITY OF HILLSDALE CHRISTMAS TREE RECYCLING PROGRAM

The City of Hillsdale Public Service Department crews will once again collect discarded natural Christmas Trees for recycling. Trees will be chipped and used for mulch in all city parks and both cemeteries. These chips will also be available to Hillsdale residents in the spring of 2026. The following schedule is tentative due to the possibility of severe weather conditions.

CURBSIDE COLLECTION

Curbside collection of Christmas trees will take place on **Monday, January 12, 2026**. Natural trees (only) must be placed at the curb area by 7 a.m. Monday, January 12, 2026. No artificial trees will be accepted. The city requires that all plastic covers, decorations and tree stands be removed prior to placement at the curb. **City crews will make one circuit around town, collecting from each residence 1 time only. ONLY CHRISTMAS TREES WILL BE COLLECTED AT THIS TIME. NO OTHER BRUSH, LEAVES, ETC. WILL BE COLLECTED OR ALLOWED AT THE CURB.**

TREE PLACEMENT

Trees must be placed on the terrace between the curb & sidewalk or near the shoulder if you reside in an area where there is no sidewalk or curb.

If you have any questions, please call the Department of Public Services at 517-437-6490. Thank you.

City of Hillsdale

Agenda Item Summary

Meeting Date: January 5, 2026

Agenda Item: Introduction and Adoption of Ordinances

Subject: Ordinance Amendment to Rezone 244 E Bacon St

BACKGROUND PROVIDED BY STAFF (Olivia Smith, Zoning Administrator):

On October 28, 2025, Chase Residence LLC, owner of 244 E Bacon St, submitted a rezoning application to the City Planning Commission. The owner intends to convert the existing vacant single-family home into a 4-unit rental.

The current zoning district of the property (RD-1: One-Family and Two-Family Residential District) does not permit multi-family dwellings. The request is to rezone the property from RD-1 to RM-1 (Multiple-Family Residential).

Per the Michigan Zoning Enabling Act (Act 110 of 2006 as amended), the Planning Commission must hold at least one public hearing before submitting recommendations for a proposed ordinance amendment to the legislative body. A public hearing was held at their December 17, 2025 meeting.

Planning Commission unanimously voted to recommend the adoption of the ordinance amendment to City Council.

RECOMMENDATION:

Planning Commission recommends City Council approve the ordinance amendment as requested.

ORDINANCE #2026-_____

AN ORDINANCE TO AMEND SECTION 36-143 OF DIVISION 1, OF ARTICLE III OF CHAPTER 36 OF THE CODE OF THE CITY OF HILLSDALE.

THE CITY OF HILLSDALE ORDAINS that the zoning classification of the following described property should be and is hereby changed from RD-1 (One-Family and Two-Family Residential District) to RM-1 (Multiple-Family Residential District)

244 E Bacon St – Parcel No. 30-006-426-401-02

LOT 6 EXC PCLS 66 FT E&W BY 165 FT N&S OUT OF NW COR & NE COR THEROF ALSO PT LOT 5 BEG SE COR SD LOT 6 TH S ALG E LN EXT 115.5 FT TH SWLY TO PT ON W LN LOT 5 214.5 FT S OF SW COR LOT 6 TH N ALG SD W LN TO SW COR LOT 6 TH E TO POB EXC ALL THAT PT ABOVE INCL IN FOLLOWING: BEG SW COR LOT 5 TH W ALG N LN ALLEY 15 FT TH N00°03'51"E 117.57 FT TH N82°47'51"E 14.99 FT TO W LN SD LOT 5 (SD PT BEING 119.56 FT N OF SD SW COR LOT 5) TH N84°28'46"E 3.7 FT TH N 1.23 FT TH N67°13'17"E 85.48 FT TH S 154.86 FT TO SLY LN SD LOT 5 TH W ALG SD S LN 82.5 FT TO POB 3.5A+/- PT LOTS 5&6 MCCOLLUMS SE ADDN SEC 26 T6S R3W FOURTH WARD

THE CITY OF HILLSDALE FURTHER ORDAINS that Section 36-143 of Division 1 of Article III of Chapter 36 of the Code of the City of Hillsdale and zoning boundaries of RD-1 (One-Family and Two-Family Residential District) and RM-1 (Multiple-Family Residential District) referenced herein should be and are hereby amended so as to comport with and reflect the changes in the zoning classification above provided.

Except as hereinbefore specifically amended, Chapter 36 of the Code of the City of Hillsdale and all articles, divisions, and sections contained therein are hereby ratified and affirmed.

This ordinance and/or a summary of its regulatory effect and its effective date shall be published within fifteen (15) days from the date of its passage as required by law.

Subject to said publication having occurred as above provided, this ordinance shall become effective fifteen (15) days from the date of its passage.

Passed at a regular meeting of the Council of the City of Hillsdale held on the fifth day of January 2026.

CITY OF HILLSDALE

By: _____
Scott Sessions – Mayor

By: _____
Katy Price – Clerk

Date Proposed: 11/19/2025

Date Published as Proposed: 11/29/2025

Date Passed:

Date Published as Passed:

Effective Date:

City of Hillsdale

Agenda Item Summary

Meeting Date: January 5, 2026

Agenda Item: Introduction and Adoption of Ordinances

Subject: Ordinance Amendment to Rezone 350 Hillsdale St Parcel B

BACKGROUND PROVIDED BY STAFF (Olivia Smith, Zoning Administrator):

On September 11, 2025, Alexis Zeiler, owner of 350 Hillsdale St, submitted a land division application to the City Assessor.

The City Planning Commission reviewed the request at their September 24, 2025 special meeting. The Planning Commission recommend the land division only be approved as presented with the condition that Parcel B must be rezoned to RD-1 prior to sale. The reason for the condition is as follows:

1. The minimum frontage for the B-1 zoning district was amended on 05/20/2025 by Ordinance # 2025-02 to be 104 feet.
2. The RD-1 district is adjacent to the west of this property.
3. The size of the proposed Parcel B meets the minimum size for a one-family residence in the RD-1 district, but does not meet the minimum size in the R-1 district (adjacent to the north).

At their October 6, 2025 meeting, City Council approved the split with the condition that an application to amend the zoning ordinance to rezone the proposed Parcel B to RD-1 must be submitted and approved prior to sale.

To fulfill that condition, Brian Shannon, prospective buyer 350 Hillsdale St Parcel B and owner of 19 Division St, submitted a rezoning application on October 28, 2025.

Per the Michigan Zoning Enabling Act (Act 110 of 2006 as amended), the Planning Commission must hold at least one public hearing before submitting recommendations for a proposed ordinance amendment to the legislative body. A public hearing was held at their December 17, 2025 meeting.

Planning Commission unanimously voted to recommend the adoption of the ordinance amendment to City Council.

RECOMMENDATION:

Planning Commission recommends City Council approve the ordinance amendment as requested.

ORDINANCE #2026-_____

AN ORDINANCE TO AMEND SECTION 36-143 OF DIVISION 1, OF ARTICLE III OF CHAPTER 36 OF THE CODE OF THE CITY OF HILLSDALE.

THE CITY OF HILLSDALE ORDAINS that the zoning classification of the following described property should be and is hereby changed from B-1 (Local Business District) to RD-1 (One-Family and Two-Family Residential District):

350 Hillsdale St Parcel B – W 79' of Parcel No. 30-006-222-229-24

COMMENCING AT A MAG NAIL SET AT THE SOUTHEAST CORNER OF SAID BLOCK B AND RUNNING THENCE N89°42'08"W, ALONG THE NORTH RIGHT OF WAY LINE OF DIVISION STREET, 147.37 FEET TO A CAPPED REBAR SET AT THE POINT OF BEGINNING OF THIS DESCRIPTION; THE BOUNDARY RUNS THENCE N89°42'08"W, ALONG SAID LINE, 79.00 FEET TO A CAPPED REBAR SET IN THE CENTERLINE OF THE VACATED ALLEY; THENCE N00°21'25"E, ALONG SAID CENTERLINE AS MONUMENTED, 82.50 FEET TO A CAPPED REBAR FOUND; THENCE S89°42'08"E, ALONG THE NORTH LINE OF LOT 12 AND ITS PROJECTION, 79.00 FEET TO A CAPPED REBAR SET; THENCE S00°21'25"W, 82.50 FEET TO THE POINT OF BEGINNING.

THE CITY OF HILLSDALE FURTHER ORDAINS that Section 36-143 of Division 1 of Article III of Chapter 36 of the Code of the City of Hillsdale and zoning boundaries of B-1 (Local Business District) and RD-1 (One-Family and Two-Family Residential District) referenced herein should be and are hereby amended so as to comport with and reflect the changes in the zoning classification above provided.

Except as hereinbefore specifically amended, Chapter 36 of the Code of the City of Hillsdale and all articles, divisions, and sections contained therein are hereby ratified and affirmed.

This ordinance and/or a summary of its regulatory effect and its effective date shall be published within fifteen (15) days from the date of its passage as required by law.

Subject to said publication having occurred as above provided, this ordinance shall become effective fifteen (15) days from the date of its passage.

Passed at a regular meeting of the Council of the City of Hillsdale held on the fifth day of January 2026.

CITY OF HILLSDALE

By: _____
Scott Sessions – Mayor

By: _____
Katy Price – Clerk

Date Proposed: 11/19/2025

Date Published as Proposed: 11/29/2025

Date Passed:

Date Published as Passed:

Effective Date:

City of Hillsdale

Agenda Item Summary

Meeting Date: January 5, 2026

Agenda Item: New Business

SUBJECT: 2025-2030 Recreation Plan

BACKGROUND PROVIDED BY STAFF (Michelle Loren, Recreation Director)

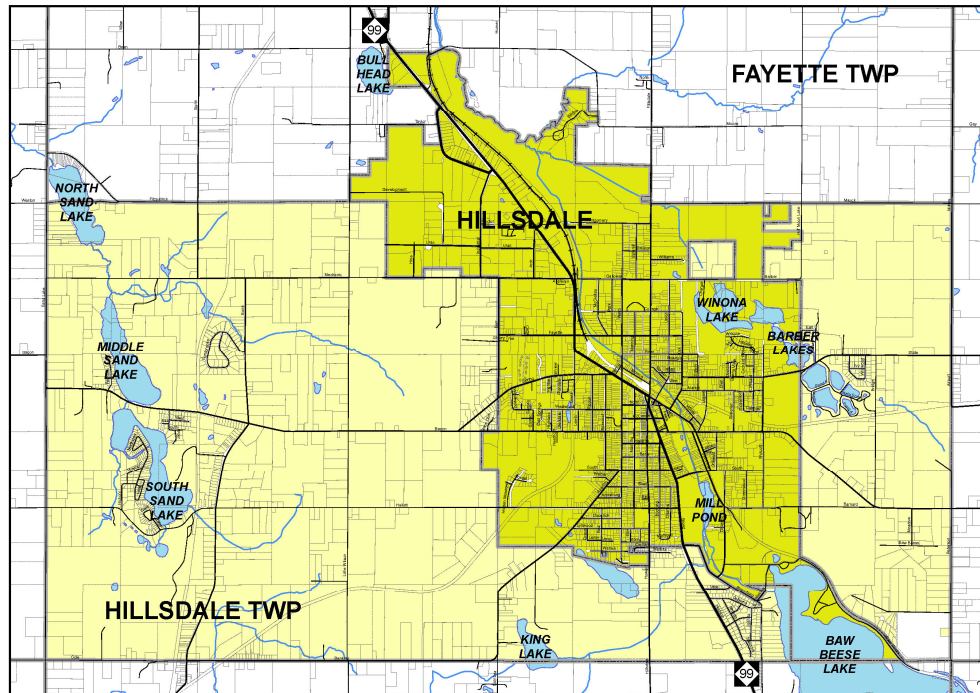
In order to apply for State and Federal funding for Parks and Recreation, it is required the City have an approved 5-year Recreation Plan in place. An updated Recreation Plan has been drafted for adoption by City Council. The Plan was approved by the City of Hillsdale Planning Commission (acting as the Recreation Advisory Commission) after a public hearing held on December 17, 2025. Once approved by Council, the Plan will then be submitted for approval by the State, allowing the City the ability to apply for both State and Federal funding for recreation programming and park improvements.

The Recreation Department and Department of Public Services have been working toward solutions to funding in order to continue making much needed improvements to the City's park system, giving priority to improvements to the public boat launch at Baw Beese Lake. Having an updated, Recreation Plan in place will allow staff to pursue the necessary funding for these projects.

RECOMMENDATION BY STAFF

I recommend Council adopt the 2025-2030 City of Hillsdale Recreation Plan.

City of Hillsdale Recreation Plan



2025-2030 Edition

Plan Approval and Adoption

Hillsdale City Planning Commission	December 17, 2025
Hillsdale City Council	January 5, 2030
Michigan Department of Natural Resources	

***The 2025-2030 edition of the City of Hillsdale Recreation Plan
will expire on December 31, 2030***

Table of Contents

Chapter

1.	Community Description	1
	Location	2
	A Brief Socioeconomic Summary	2
	The Health of Residents	4
2.	Administrative Structure	5
	Authorization	6
	Organizational Structure	6
	Sources of Funding	7
	Parks and Recreation Budgeting	8
	Relationships with Other Public Agencies	8
	Awareness of Recreational Opportunities and Facilities	9
3.	Recreation and Resource Inventories	11
	Recreation Inventory	12
	Municipal Parks and Recreation Facilities	12
	County Parks and Recreation Facilities	14
	School Facilities	15
	Private and Quasi-Public Recreation Facilities	17
	State Parks	20
	Other Local Parks	20
	Trails and Sidewalks	21
	National and State Historical Sites	22
	Park Standards and Types	23
	Resource Inventory	24
	Recreational Programming	25
	Soils	25

	Topography.....	26
	Land Use.....	26
	Water Resources.....	26
4.	Descriptions of the Planning and Public Input Processes.....	27
	Description of the Planning Process	28
	Description of the Public Input Process.....	28
	Residential/Family Recreation Survey	29
	One-Month Review Period	Appendix D
	Joint Recreation Planning Advisory Committee Meeting.....	Appendix D
	Hillsdale County and Region 2 Planning Commission.....	Appendix D
	Public Hearing.....	Appendix D
5.	Goals and Objectives	45
	Goals and Objectives	46
	Background Information	48
	#1 Enhance current and develop new opportunities for Hillsdale area residents and visitors to participate in a variety of recreational activities	48
	#2 Create a community identity that enhances the City's and Township's positive attributes and natural resources	48
	#3 Improve the area park system by enhancing existing facilities and planning for expansion of additional recreational spaces	49
	#4 Expansion and improvement of trails in the City and Township	51
6.	Action Program.....	52
	Action Program	53

Appendices

Appendix A

Population Summary	A-1
Population History and Projections	A-2
Age & Sex of the Population	A-4
Household & Family Composition	A-5
Racial & Ethnic Composition	A-5
Disability of Residents.....	A-5
Income.....	A-6

Appendix B

Recreation and Resource Inventories	B-1
--	-----

Appendix C

Maps	C-1
Location	C-2
School Districts	C-3
Recreation	C-4
Trail Network	C-5
Hydrology & Topology	C-6
Future Land Use.....	C-7
Action Plan	C-8

Appendix D

Public Involvement and Promotion	D-1
---	-----

Chapter 1

Community Description

City of Hillsdale

A priority of the City of Hillsdale is to develop and implement a recreation plan which responds to the recreational desires of its citizens and to plan for enhancements to parks and recreation programs. A sincere effort was spent in developing this plan which represents the projected needs for recreation facilities and services in the City surrounding areas. For example, the plan provides a clear picture of the recreational opportunities available to residents regardless of who provides them. Nontraditional recreation opportunities such as historic districts/structures and shopping opportunities are also catalogued as well as traditional parks and recreation facilities.

Location

The City of Hillsdale is located in northwestern Hillsdale County, close to Michigan's border with Northwest Ohio and Northeast Indiana (please see the Regional Location Map). Michigan Highway 99 (M-99) traverses the community and United States Highway 12 (US-12) is located to the north as it traverses the Village of Jonesville. Those thoroughfares provide access to the urbanized areas of Jackson, Ann Arbor, Detroit, Battle Creek, Kalamazoo, and Grand Rapids.

The City of Hillsdale has an area of 6.23 square miles. The communities are surrounded by the following local units of government:

ADJACENT LOCAL UNITS OF GOVERNMENT	
FAYETTE TOWNSHIP	CAMBRIA TOWNSHIP
ADAMS TOWNSHIP	READING TOWNSHIP
JEFFERSON TOWNSHIP	ALLEN TOWNSHIP

A Brief Socioeconomic Summary

The demographic composition of the population of the City of Hillsdale has an effect upon its recreational needs. Pertinent demographic components are listed below along with a brief paragraph describing the local situation. Each of the components is described in greater detail in Appendix A of this document.

- **Population History & Projections**

The 2023 population for the City of Hillsdale was 8,013 residents a decrease of nearly 200 residents in 2013. The population of the City increased fairly steadily from 1930 through 2010. While the majority of residents in Hillsdale County continue to live in the City, this majority is steadily decreasing each decade.

- **Age & Sex of the Population**

Persons under the age of 18 (19.9%) comprise well under half of the City of Hillsdale's population while people aged 65 and over comprised well under a quarter of the population in the City (13.9%) in 2023. 66.23% being 18-64 year of age. Just over half of City (52%) residents were female in 2023.

- **Household & Family Composition**

Almost two-thirds of Hillsdale Area households (66%) were comprised of 1 or 2 people in 2000. Only a small portion of Area households (10%) contained 5 or more individuals. Almost two-thirds (61%) of Area households were comprised of families.

- **Racial & Ethnic Composition**

Race and ethnicity are not significant issues for recreation given the homogeneity of the populations of the City of Hillsdale. For example, almost all City (87.1%) residents considered themselves white in 2023; Black/African Americans (1.75%) and Hispanics/Latino (3.41%) comprised a very small portion of the populations of the City that year.

- **Disabilities of Residents**

Disabled residents comprised less than a quarter of City of Hillsdale (13%) residents in 2021. It is important to note that older residents are more apt to have a disability than their younger neighbors.

- **Income**

The median income for City of Hillsdale households (\$47,817.00) was less than that for the State of Michigan (\$71,149) in 2023.

The Health of Residents

A little more than one third of Michigan residents were obese in 2023, according to Healthy Michigan, Michigan Health & Wellness, and people who are overweight or obese combined comprise two thirds of the population. "Overweight and obesity substantially increase the risk for cardiovascular disease, type 2 diabetes, hypertension, lipid disorders, stroke, gallbladder disease, osteoarthritis, sleep apnea, respiratory problems, psychological disorders, stress, incontinence, and cancers of the endometrium, breast, prostate and colon," according to that report.¹The obesity rates for Hillsdale County and the State of Michigan in 2023 were 35% and 32.5%, respectively, according to www.countyhealthrankings.org.

A couple factors of particular relevance to community growth, development, and planning contribute to unhealthy weight:

- "Inadequate community infrastructure limits the ability of people to be active. These include lack of accessible indoor and outdoor exercise facilities, neighborhood sidewalks, walking paths, and bicycle trails. Additionally, inclement weather, lack of adequate recreational opportunities, fear of unsafe neighborhoods, and unattractive/unpleasant local environments may prevent people from exercising."
- "Programs and policies are necessary to promote smart community growth and the establishment of urban and rural environments supportive of physical activity. Active community environments provide access to safe favorable conditions for physical activity and promote the development of social support networks that encourage activity."

The report recommends cooperation among state and local units of government and residents in the promotion of active environments, including the following actions:

1. "Develop walkable communities by widening and maintaining or building sidewalks, safe roadway crossings, and aesthetically pleasing areas."
2. "Encourage bicycling by developing, maintaining, and promoting the use of bike paths."
3. "Require [that] all urban planning and re-design incorporate the concepts of active community environments and there by promote physical activity."

¹The report, developed by the Institute for Public Policy & Social Research and the Institute for Healthcare Studies at Michigan State University, is part of a series entitled "Informing the Debate: Health Policy: Options for Michigan Policymakers".

Chapter 2

Administrative Structure

City of Hillsdale

Authorization

In response to identified recreation needs, the Hillsdale City Council formed a Recreation Planning Advisory Committee to develop the City of Hillsdale Recreation Plan under the authority of Public Act 156 of 1917 (Recreation and Playgrounds). The act “authorizes cities, villages, counties, townships and school districts to operate systems of public recreation and playgrounds” (emphasis added) and allows them to:

- “operate a system of public recreation and playgrounds; acquire, equip and maintain land, buildings or other recreational facilities; employ a superintendent of recreation and assistants; vote and expend funds for the operation of such system.”
- “operate such a system independently or they may cooperate in its conduct in any manner which they may mutually agree; or they may delegate the operation of the system to a recreation board created by any or all of them, and appropriate money, voted for this purpose, to such board” (emphasis added).

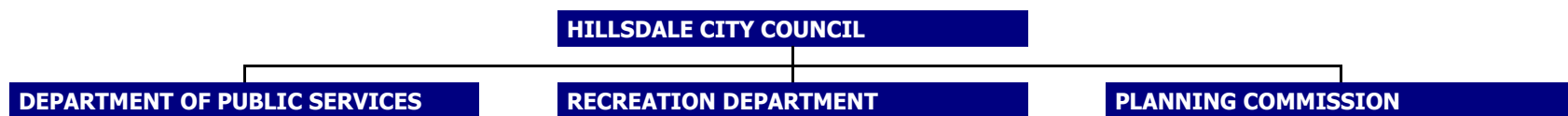
The act also allows park systems to operate on “(1) property under its custody and management; (2) other public property;” and “(3) private property, with the consent of the owners.”

A copy of PA 156 of 1917 is available online at [http://www.legislature.mi.gov/\(jvpdab552soxemek3mee3h55\)/documents/mcl/pdf/mcl-Act-156-of-1917.pdf](http://www.legislature.mi.gov/(jvpdab552soxemek3mee3h55)/documents/mcl/pdf/mcl-Act-156-of-1917.pdf)

Organizational Structure

The following bodies are involved in the provision of municipal recreation:

CITY RECREATION STRUCTURE



- **City of Hillsdale.** The responsibility for Hillsdale’s parks and recreation programs is divided among several authorities. For example, the Department of Public Services is responsible for parks and recreation facility maintenance and the Recreation Department administers the municipality’s recreation programming. Planning for the parks and recreation system is provided by the Planning Commission. The City may also utilize volunteers for specific programs and projects. City Council maintains final authority over Hillsdale’s parks and recreation facilities and programs.

The City Council is comprised of a Mayor and 8 council members representing 4 wards. The Planning Commission is comprised of 7 members, including the following *ex officio* members: the Mayor and City Manager. The Department of Public Services is comprised of a Director, 6 fulltime employees, 2 to 3 seasonal employees, and 2 to 3 temporary workers, annually. The Recreation Department is comprised of a Director, seasonal employees, and relies heavily on numerous volunteers.

- **Headwaters Recreational Authority.** The City of Hillsdale, the City of Jonesville, and the Townships of Fayette and Hillsdale joined together in 2011 to establish an authority to oversee the development of trails within Hillsdale County. The Authority may utilize volunteers for specific projects. The Authority's Board is comprised of 2 representatives from each municipality and 1 representative appointed by the County.
- **Recreation Planning.** The Recreation Planning Advisory Committee is responsible for the development of the City of Hillsdale Recreation Plan. Membership is comprised of the Planning Commission of the City. The Committee is staffed by the City of Hillsdale's Planner and Recreation Director.

Sources of Funding

The City of Hillsdale and Hillsdale Township identify several potential sources of revenue for their recreation facilities and programs:

- general tax fund dollars
- grants awarded for specific projects; and
- participation fees for recreation programs and use of park facilities; and
- donations from the general citizenry and philanthropic organizations.

General fund tax dollars are used for the maintenance and programming of City parks and recreation facilities, including the cost of producing this Plan. Grants are generally awarded for the acquisition of parkland and the development of a park or recreational facility (e.g., trails, playgrounds, picnic shelters, sports facilities, etc.). Donations to be used at the discretion of the City or for a specific facility or program are also accepted. A portion of the local match required of most grants may also come from the general funds or donations. Grants for parks and recreational facilities are likely to come from several sources:

- **The Michigan Department of Natural Resources**

- The Michigan Natural Resources Trust Fund
- The Land and Water Conservation Fund²
- **The Michigan Department of Transportation**
 - The Transportation Enhancement Program¹
- **The Hillsdale County Road Commission**
 - The 1% annual allocation of state transportation (Act 51) funds for non-motorized facilities.
- **Community Foundation**

Parks and Recreation Budgeting

The parks and recreation budget for the City of Hillsdale is used almost entirely for the maintenance and programming of its parks. The budget for 2025-26 is \$157,000.00. Capital outlays are also made for capital improvements to existing facilities, development and construction of new facilities, preparation of grant applications, and development of new recreational opportunities.

Relationships with Other Recreation Providers

The City is not the only supplier of parks and recreational opportunities to the residents of Hillsdale and the surrounding area.

Schools. Hillsdale Community Schools is also a major supplier of parks and recreational opportunities to City and county residents (please see the School Districts map). The Hillsdale County Intermediate School District (which includes Hillsdale Community Schools) provides educational services to residents and local school districts. However, there are many opportunities for area schools to utilize local parks and nature sanctuaries to educate students and their parents about the natural environment, especially the plethora of aquatic resources available to area residents. Cooperation with area schools also creates opportunities for new recreation programs.

² This is a Federal program administered locally by the State of Michigan.

- **Local, County, State Government and Private Providers.** Hillsdale County and other nearby cities and villages, as well as some townships maintain parks. The State of Michigan also provides a variety of recreational facilities in the form of state game, wildlife, and recreation areas; state historic parks; and state parks throughout the State (although none of those facilities are located in the City). A variety of private entrepreneurs and quasi-public agencies also provide recreation facilities and programs in and around the Township. Recreational activities take place in all of the facilities listed above. Those programs are sponsored by a variety of public, quasi-public, and private boosters. As health awareness continues to be of importance, expansion and promotion of these activities becomes increasingly important.

Please refer to Chapter 3 for a more detailed description of recreation facilities in the Hillsdale Area.

Awareness of Recreational Opportunities and Facilities

A review of Chapter 3 will illustrate the wealth of recreation facilities, recreational programs, and natural resources available to the residents of the City of Hillsdale. Promotion of the wealth of opportunities within the City of Hillsdale and the outlying areas has become a priority. As a selected city of Region 9 for the Governor's Prosperity Project, Rising Tide Initiative, the City of Hillsdale has begun development of placemaking, wayfinding, and branding strategies reflective of the area's many attributes. Quality of Life is considered one of Hillsdale's greatest assets due in large part to its many lakes, parks, and recreational opportunities. The City has hosted public forums with regard to these strategies. Participation has included organizations county-wide, both Hillsdale and Jackson Colleges, Hillsdale Hospital, and the general public. In an effort to further promotion, the City's Recreation Department continues to enhance its webpage, maintains a presence through social media, and public presentations. The Department continually updates its information and includes the web and social media connection information in all its publications and public announcements.

The redevelopment of Sandy Beach on Baw Beese Lake in the City of Hillsdale has been a grand scale effort by Hillsdale Rotary and the City to bring a local gem back to its splendor. In the fall of 2022, the parking lot was paved and a pavilion was erected (paid for by a private citizen with help from the community) marking the final phase of the redevelopment. The newly renovated park has become a "recreation destination" landmark for the entire area and serves as a trail destination as well. This has spurred what seems to be a movement by other service groups and residents to adopt and renovate other parks within the City.

Chapter 3

Recreation and Resource Inventories

City of Hillsdale

Recreation Inventory

The recreation inventory is comprised of all of parks and recreation facilities and programs available to the residents of the City and Township, not just those owned and managed by the local units of government (please see the Recreation Facility map). The facilities and programs were identified through local knowledge and review of current and historic documents and maps.

Municipal Parks and Recreation Facilities

The City of Hillsdale provides ten formal parks which contain a variety of recreation facilities. Waterworks Park, Owen Memorial Park, Sandy Beach Park, and the Baw Beese Trail form an important component of the City's park system centered on Baw Beese Lake. The other parks are distributed throughout Hillsdale.

CITY OF HILLSDALE PARKS

	NAME	ACRES	FACILITIES	BFA*
A	SAM LOPRESTO FIELD	5.8	2 BASEBALL DIAMONDS, GREEN SPACE	N/A
B	MRS. STOCKS PARK	8.8	PAVILION WITH ELECTRIC, PICNIC TABLES, GARDENS AND LANDSCAPING, SCULPTURES, POND WITH FOUNTAINS, ISLAND, ST. JOSEPH RIVER	3
C	WATERWORKS PARK	8.3	PLAYGROUND EQUIPMENT, GRILLS, DNR BOAT LAUNCH, FISHING AREAS, SWIMMING AREA, PICNIC TABLES, PARKING AREA, PORTABLE RESTROOM FACILITIES	2
D	OWEN MEMORIAL PARK	37.3	2 PLAY AREAS, 2 PAVILIONS WITH ELECTRIC AND WATER, GRILLS, PICNIC TABLES, BENCHES, FISHING AREAS, SWIMMING AREA, DISC GOLF COURSE, GREEN SPACE, BOAT SLIPS, 2 WHARF, PORTABLE RESTROOM FACILITIES	
E	ROTARY PARK AT SANDY BEACH		BEACH, PLAYGROUND, GRILLS, PICNIC TABLES, 2 SAND VOLLEYBALL COURTS, REGULATION SIZE BASKETBALL COURT, BOAT SLIPS, DOCKING SYSTEM, CONCESSIONS/PLUMBED RESTROOMS	5
F	KEEKOOSE PARK	3.3	BASEBALL DIAMOND WITH SEATING, PLAYGROUND, GREEN SPACE	1

G	FIELDS OF DREAMS	58.6	3 BASEBALL FIELDS (2 SCOREBOARDS), 2 SOCCER FIELDS (1 SCOREBOARD), PAVILION, BLEACHERS, BENCHES, PLAYGROUND, CONCESSIONS, PLUMBED RESTROOMS, IRRIGATION 2 SYSTEM, STORAGE BUILDING WITH INDIVIDUAL UNITS	
H	COLD SPRINGS PARK	2.1	PICNIC TABLES, PLAYGROUND, GRILLS, OPEN PLAY AREA, STREAM, POND	3
I	ORVILLE MYER PARKWAY	13.4	GREENSPACE	N/A
<i>*PLEASE SEE PAGE 22 FOR THE BFA (BARRIOER FREE ACCESS) KEY</i>				

Since the completion of the Sandy Beach project, Hillsdale Rotary has since proposed the development of a fitness park located just outside of the City's downtown adjacent to Mrs. Stock's Park and the Baw Beese Trail. Upon the donation of the property by a local businessman, the plans for the park have been rolled out. The park is to include outdoor fitness equipment, a children's play area, pickle ball courts and a pavilion.

Kiwanis has made several improvements to Cold Springs Park over the years. This project has involved revitalization of some play equipment and replacement of other pieces with ADA approved equipment, pouring of sidewalks for accessibility and installation of certified fall zones. Plans to clear the springs and pond will be the next endeavor.

Hillsdale Exchange Club has "adopted" Waterworks Park proposing a 3 phase plan for renovation. As of Spring of 2025, the installation of a fishing pier, an inclusive play swing set, and universal play structure have been installed. The final phase of improvements is planned for Spring of 2026 with the installation of various stand-alone play equipment.

Local hardware store, Gelzer's Hardware, has spearheaded plans to develop an 18 hole professional grade disc golf course within the Baw Beese Park System. The course will be developed on vacant, undeveloped land owned by the City. Funding will be provided by several volunteers, local businesses and the City's Parks budget. The course will consist of cement golf tees, disc golf baskets and flags and will maintain the natural landscape of the land. The addition of the disc golf course will attract visitors from all around affecting a boost to the local economy in turn.

CEMETERIES

	NAME	ACRES	
J	LAKE VIEW CEMETERY	13.0	
K	OAK GROVE CEMETERY	51.2	
L	KING LAKE CEMETERY	7.0	
M	SAND LAKE CEMETERY	51.2	

Many people do not consider cemeteries to be recreational facilities. However, they are also utilized as places to exercise and commune with nature. The City of Hillsdale maintains Lake View and Oak Grove Cemeteries and Hillsdale Township maintains the King Lake and Sand Lake Cemeteries

OTHER MUNICIPAL FACILITIES

	NAME	ACRES	FACILITIES
N	HILLSDALE COUNTY SENIOR SERVICES CENTER PERENNIAL PARK	12.2	ADA COMPLIANT FACILITY WITH: CONVENTION ROOM, MULTI-PURPOSE MEETING AREAS, RENTAL FACILITIES, COMPUTER LAB, COMMERCIAL KITCHEN, FITNESS CENTER, WEIGHT ROOM, LIFE ENRICHMENT CLASSES, WALKING PATHS (PET FRIENDLY), AND GARDENS, ADULT DAY CARE, 24 HOUR RESPITE, IN-HOME SERVICES, EQUIPMENT LOAN LIBRARY, NON-EMERGENCY TRANSPORTAION
O	HILLSDALE MUNICIPAL AIRPORT	441.6	5,000 FOOT RUNWAY WITH FUELING/HANGAR/FLIGHT INSTRUCTION SERVICES, TERMINAL
Q	HILLSDALE COMMUNITY LIBRARY/ MITCHEL RESOURCE CENTER	1.2	COLLECTIONS OF BOOKS, PERIODICALS, AUDIO BOOKS, AND VIDEOS; ASSISTANCE IN GENEEOLOGICAL RESEARCH, HISTORICAL DOCUMENT PRESERVATION, AND ARCHIVAL SERVICES; COMPUTER/INTERNET ACCESS; AND PUBLIC MEETING ROOMS, TEEN AND YOUTH SUMMER PROGRAMS
R	SIMPSON OUTDOOR EDUCATION CENTER	6.0	¹³ NATURE PATHS AND OUTDOOR EDUCATIONAL LAB.

A variety of other municipal facilities can be used recreationally, even though that is not their primary use. For example, recreational flyers can use the airport, many people read for pleasure, and the nature paths in the outdoor education center can be used for exercise.

County Parks and Recreation Facilities

The County of Hillsdale provides park and recreation facilities to its residents and visitors. Lewis Emery Park is located within Hillsdale Township, just east of the City of Hillsdale. Kathe and Cali Hillsdale County Park, Bird Lake Park, and Hemlock Beach Park, also maintained by Hillsdale County, are located elsewhere in the county.

COUNTY OF HILLSDALE PARKS

	NAME	ACRES	FACILITIES
S	LEWIS EMERY PARK	87.5	PLAYGROUND, BASEBALL DIAMOND, PAVILIONS, PICNIC TABLES, GRILLS, COMMUNITY BUILDING, FISHING PIERS, SLEDDING HILLS

Hillsdale County Agricultural Society owns the fairgrounds for the Hillsdale County Fair are located in the City of Hillsdale. The fairgrounds are used for a variety of purposes throughout the year —many of which are recreational in nature— as well as during fair week. The fairgrounds for the Hillsdale County Fair are located in the City of Hillsdale. Other than the annual Agricultural Fair, the fairgrounds are used for a variety of purposes throughout the year; 4H Programs, camping, horseshoes, equestrian events, fireworks display, RV Sales, auctions, and weddings.

HILLSDALE COUNTY FAIR

	NAME	ACRES	FACILITIES
T	HILLSDALE COUNTY FAIRGROUNDS	42	EQUESTRIAN ARENA, PICNIC AREA, LIVESTOCK BARNES, 4H BUILDINGS, HISTORICAL BARNES/BUILDINGS, HISTORICAL SOCIETY MUSEUM, FAIRGROUND MUSEUM, GRANDSTAND, BAND SHELL, CAMPING SITES, HORSESHOE PAVILION, HORSE RACE TRACK, FARMERS MARKET/AUCTION, DINER, WEDDINGS, PLUMBED RESTROOMS

School Recreation Facilities

A variety of educational institutions provide recreation facilities to the residents of the City of Hillsdale and the surrounding areas.

Hillsdale Community Schools

Hillsdale Community Schools educate the majority of children in the City.

HILLSDALE COMMUNITY SCHOOL FACILITIES

	NAME	ACRES	FACILITIES
U	HILLSDALE HIGH SCHOOL	37.9	FOOTBALL FIELD WITH LIGHTS, BASEBALL FIELD, SOFTBALL FIELD, GYMNASIUM, TRACK, AND TENNIS COURTS (JIM INMAN PARK), COFFEE SHOP, LIBRARY
V	DAVIS MIDDLE SCHOOL	3.9	TWO GYMNASIUMS, AUDITORIUM, OUTDOOR BASKETBALL COURTS, PLAYGROUND, LIBRARY
W	HORIZON ALTERNATIVE SCHOOL	-	HOUSED INSIDE HILLSDALE HIGH SCHOOL
X	GEIR ELEMENTARY SCHOOL	5.8	GYMNASIUM, OUTDOOR BASKETBALL COURTS, MULTIPURPOSE ROOM (GYMNASIUM/CAFETERIA/STAGE), PLAYGROUND
Y	BAILEY EARL CHILDHOOD LEARNING	1.6	GYMNASIUM WITH STAGE, OUTDOOR BASKETBALL COURTS, PLAYGROUND,

Other School Facilities

A variety of other school facilities are also located in and around the City. The Hillsdale County Intermediate School District (ISD) maintains several of those facilities. Greenfield School is a special education facility, the Hillsdale Workforce Development and Technology Center is a career education facility. Will Carleton Academy (K-12) and Hillsdale Preparatory School (K-8) are chartered by the ISD and Hillsdale Academy is a private K-12 school operated under the auspices of Hillsdale College. The Community Action Agency (CAA) operates the local Head Start program for Hillsdale County. All of the above institutions provide recreational facilities and programs for their students.

Local Colleges

Some people take classes for recreational as well as educational purposes. City residents can avail themselves of the learning opportunities and recreational facilities and programs provided by local colleges. Hillsdale College is located in the City. Jackson College (JC) maintains a local presence in Hillsdale County through its Hillsdale Center also located within the City of Hillsdale. Hillsdale College provides a wide variety of recreational facilities (e.g., weight/fitness room, climbing wall, indoor pool, athletic fields, courts, tennis facility etc.) and programs to its students and the general public. Some facilities, such as the Slayton Arboretum and the Children's Arboretum are also listed separately in this inventory.

OTHER SCHOOL FACILITIES

	NAME
Z	WILL CARLETON ACADEMY
AA	HILLSDALE ACADEMY
AB	LOCHHAVEN CENTER (ISD)
AC	GREENFIELD SCHOOL (ISD)
AD	HILLSDALE WORKFORCE DEVELOPMENT AND TECHNOLOGY CENTER (ISD)
AE	HEADSTART (CAA)
AF	HILLSDALE PREPATORY SCHOOL

LOCAL COLLEGES

	NAME
AG	HILLSDALE COLLEGE
AH	JACKSON COLLEGE

CLUBS, LODGES, AND CHURCHES

Private and Quasi-Public Recreation Facilities

A wide variety of private and quasi-public institutions also provide recreation facilities to their members and/or the general public.

Perennial Park Senior Center is a private nonprofit organization that provides a multitude of recreational activities including: fitness center, computer lab, multi-purpose meeting areas, full commercial kitchen and large dining area, walking paths and life enrichment programming that incorporates the mental, physical, emotional, and intellectual needs of Hillsdale County residents. Many life enrichment classes are offered through volunteers willing to share their talents and experiences with other and have included; golf conditioning, genealogy, art-works, strength training, public speaking, music, tap dancing, foreign policy discussion groups, health fairs, and special event days highlighting seasonal holidays/ themes throughout the year. Perennial Park is an American with Disabilities compliant facility with long range vision plans in place to build an in-door pool/gymnasium, pickle ball courts, affordable senior housing and outdoor fitness equipment stations.

	NAME
AI	ELKS LODGE
AJ	ST. PAUL'S CHURCH
AK	HILLSDALE UNITED BRETHREN CHURCH
AL	AMERICAN LEGION
AM	FREE METHODIST CHURCH
AN	BANKERS BALLFIELD

Clubs, Lodges, and Churches

A number of private and quasi-public institutions also provide recreation facilities to City and Township residents. For example, the lodge maintained by the Elks contain a bar, restaurant, and banquet hall. Local churches may have gymnasiums, classrooms, and other facilities available to clubs and for other formal and informal recreational programs.

Camps and Campgrounds

Gateway Campground is located along South Sand Lake in Hillsdale Township. Other facilities, such as Hillsdale County Fairgrounds, 6 Lakes Campground, Marble Springs Campground, and Way Back In are other camping options located in and around Hillsdale County. Camp Michindoh and Kimball Camp are facilities that provide recreational/educational experiences for youth from all around.

Arboretums and Sanctuaries

Slayton Arboretum—which displays and preserves living plant collections and native plant communities—is located on the Hillsdale College Campus and is open to the general public. The Wildlife Park Sanctuary and the Wildlife Sanctuary, which lie along the St. Joseph River, preserve wildlife habitat and open space within the City of Hillsdale. Future plans are being laid to extend the Baw Beese Trail through the Wildlife Sanctuary and connect with the newly constructed Jonesville Rail Trail.

Golf Courses

The Hills of Baw Beese Lake and White Oaks Public Golf Course are located in Cambria Township are to the south of the City of Hillsdale. A total of 12 other courses are located within 20 miles of Hillsdale, including the nearby Mill Race Golf Course in Jonesville and Litchfield Greens, a municipally owned golf course in Litchfield. Cottage Inn Pizza provides dining, rental space for parties, arcade, and go carts.

GOLF COURSES

	NAME	ACRES	FACILITIES
AU	THE HILLS OF BAW BEESE	55.5	9-HOLE COURSE, PRO SHOP, RESTAURANT, PUSH CARTS, AND RIDING CARTS.
AV	WHITE OAKS PUBLIC GOLF COURSE	118.8	18-HOLE COURSE, PRO SHOP SNACK SHOP, PULL CARTS, AND RIDING CARTS.

Other Private Recreation Facilities

A variety of other recreational facilities are also located within Hillsdale and Hillsdale Township. Together, they provide opportunities for bowling, dance/fitness classes, roller skating, arcade games, billiards/pool, video rentals, and movie theaters.

The Well Activity Center is a state of the art fitness center and court complex in a 5,000 square foot facility offering memberships and drop in rates featuring a workout room, basketball and pickle ball courts, trainers, and a café.

ARBORETUMS AND SANCTUARIES

	NAME
AR	SLAYTON ARBORETUM
AS	WILDLIFE PARK SANCTUARY
AT	WILDLIFE SANCTUARY

PRIVATE RECREATION FACILITIES

	NAME	ACRES	FACILITIES
AW	COTTAGE IN PIZZA	1.1	RESTAURANT, ARCADE, ROOM RENTALS, GO KARTS
AX	HILLSIDE LANES	4.1	BOWLING LANES, PRO SHOP, POOL TABLES, ARCADE GAMES, RESTAURANT AND SNACK BAR.
AY	THE WELL ACTIVITY CENTER	2.9	BASKETBALL COURTS, PICKLE BALL COURTS, PERSONAL TRAINING, CAFÉ, FITNESS EQUIPMENT, FITNESS CLASSES, WALKING TRACK
AZ	SALVATION ARMY	0.8	MULTIPURPOSE ROOM
BA	HILLSDALE GYMNASTICS CENTER	0.1	MULTI-PURPOSE ROOM, GYMNASTIC EQUIPMENT, CLASSES
BB	PREMIER THEATERS	--	SIX-SCREEN THEATER, STATE OF THE ART SEATING
BC	ANYTIME FITNESS	--	EXERCISE/FITNESS EQUIPMENT, PERSONAL TRAINERS
BD	PRIME	--	EXERCISE/FITNESS EQUIPMENT

State Parks

Michigan maintains a number of recreational facilities within the region. For example, the Department of Natural Resources (DNR) maintains the Lost Nation, Somerset, and Adams state game areas in Hillsdale County. Additional state game and recreation areas and state parks are located in neighboring counties. The DNR also maintains 9 boat launches in Hillsdale County.

STATE OF MICHIGAN RECREATIONAL FACILITIES

STATE PARKS

CAMBRIDGE HISTORICAL (LENAWEE CO)

WALTER J. HAYES (LENAWEE CO)

STATE OF MICHIGAN RECREATIONAL FACILITIES

STATE GAME AREAS

ADAMS (MINI) (HILLSDALE CO)	SHARONVILLE (JACKSON CO)
LOST NATIONS (HILLSDALE CO)	SOMERSET (HILLSDALE CO)
ONSTED (LENAWEE CO)	

STATE RECREATION AREAS

LAKE HUDSON (LENAWEE CO)	WATERLOO (JACKSON CO)
--------------------------	-----------------------

Other Local Parks

The nearby City of Jonesville also contains a couple of municipal parks. Other nearby cities, villages, and townships may also provide parks and recreational facilities for their residents.

CITY OF JONESVILLE PARKS

NAME	NAME
CARL FAST MEMORIAL PARK	WRIGHT STREET PARK

Trails and Sidewalks

The Michigan Department of Transportation (MDOT) maintains the "Hill-Jo" Trail, which connects the City of Jonesville to the City of Hillsdale along the M-99 corridor. The Baw Beese Trail connects Downtown Hillsdale with city parks along Baw Beese Lake while the Jerry Russell Trail connects Downtown Jonesville to the "Hill-Jo" Trail. The addition of the new trail plays a key role in the larger plan of Headwaters Recreational Authority to connect the Hillsdale and Jonesville communities. In 2019, Headwaters Recreational Authority will make application to the DNR Trust Fund and MDOT TAP Program to secure funding to begin construction of the trail connecting the two cities and their recreational opportunities. The project will also include designating a trail head at Cottage Inn Pizza.

These trails are part of the greater North Country Scenic Trail – a multi-state facility that traverses New York, Pennsylvania, Ohio, Michigan, Wisconsin, Minnesota, and North Dakota.

Many City of Hillsdale streets are also served by sidewalks. However, there are opportunities for additional connections to other parks and the creation of non-motorized loops for exercising. Improved way-finding and the development of printed and electronic mapping systems are also important projects.

NON-MOTORIZED RECREATIONAL TRAILS

	NAME	MILES	FACILITIES
BE	HLL-JO TRAIL	5.5	BIKE/WALKING/JOGGING TRAIL.
BF	BAW BEESE TRAIL	7.5.	BIKE/WALKING TRAIL.
BG	JERRY RUSSELL TRAIL (JONESVILLE)	1.4	BIKE/WALKING TRAIL

Shopping and Eating

Many people enjoy shopping and going out to eat, making Downtown Hillsdale and nearby Downtown Jonesville recreation destinations with their restaurants, shops, and other attractions. The proximity of Hillsdale and Jonesville to the commercial areas of larger nearby communities increases the opportunities for this type of activity.

National and State Historical Sites

Hillsdale Township and the City of Hillsdale contain 15 historic sites that have state and/or national significance. Michigan's State Historic Preservation Office provides more information on the following sites as well as the other 12 sites in Hillsdale County.³

NATIONAL AND STATE HISTORICAL SITES

STRUCTURE	ADDRESS/LOCATION	REGISTERS*
FREE WILL FIRST BAPTIST CHURCH	204 N MANNING STREET	SR HM
FIRST METHODIST EPISCOPAL CHURCH	45 N MANNING STREET	SR
GRANGE HALL	115 S BROAD STREET (FAIRGROUNDS)	SR
HALLETT-STEVENSON HOUSE	101 W HALLETT STREET	SR
HILLSDALE CITY HALL	97 BROAD STREET	SR

NATIONAL AND STATE HISTORICAL SITES (CONTINUED)

STRUCTURE	ADDRESS/LOCATION	REGISTERS*
HILLSDALE COLLEGE INFORMATIONAL DESIGNATION	FRONT STREET CAMPUS	SR HM
HILLSDALE COUNTY COURTHOUSE	COURTHOUSE SQUARE	NR SR HM
HILLSDALE DOWNTOWN HISTORIC DISTRICT	DOWNTOWN HILLSDALE	NR
SAINT ANTHONY CATHOLIC CHURCH	11 N BROAD STREET	SR HM
ST PETER'S CHURCH	3 BROAD STREET	SR HM
FREDERICK W STOCK HOUSE	3 S BROAD STREET	SR

³ Historic Sites Online page of the State's website(www.mcgi.state.mi.us/hso)

HILLSDALE COUNTY POOR HOUSE	180 WRIGHT STREET	SR
JAMES W WINSOR STORE	27 N BROAD	SR
18TH MICHIGAN INFANTRY REGIMENT, 1862	LEWIS EMERY COUNTY PARK	SR
WILLIAM R. KIRBY SR HOUSE	377 STATE ROAD	SR

*NR = NATIONAL REGISTER ; SR = STATE REGISTER; AND HM = HISTORIC MARKER

Park Standards and Types

A park and recreation plan should also recognize and use appropriate park standards. The National Parks and Recreation Association (NPRA) recommends a minimum of 10 acres per 1,000 people (please see Appendix B). This means that Hillsdale Township and the City of Hillsdale should have approximately 92.4 acres to meet the needs of their combined population in 2015. The parks provided by the City of Hillsdale and Lewis Emery County Park have a combined acreage of 228.3 acres. Hillsdale Community Schools and the cemeteries maintained by the City and Township add another 137.6 acres. Recreational facilities located on school grounds generally function as community parks as do all of the City's parks and Lewis Emery County Park. The various private and quasi-public facilities have a community-wide or even a regional function.

Grant-Assisted Parks and Recreation Facilities

The following recreation grants were awarded to the City of Hillsdale through the Michigan Department of Natural Resources.

RECREATION GRANT HISTORY

PARK NAME	PROJ. NO.	YEAR	USAGE
WATERWORKS PARK	26-00455	1973	BOAT LAUNCH
WILDLIFE SANCTUARY	TF98-051	1998	WILDLIFESANCTUARY/WILDLIFE PRESERVE

Barrier-Free Access

It is important that the parks and recreation facilities operated by the City of Hillsdale be accessible to people with disabilities and remain safe for all users. Accordingly, the parks and recreation facilities operated by the City of Hillsdale were also rated according to their level of barrier free access.⁴ The number listed under the BFA column in that table equates to the barrier-free rating listed below:

BARRIER FREE ACCESS (BFA) ANALYSIS

KEY	DESCRIPTION
1 =	NONE OF THE FACILITIES/PARK AREAS MEET ACCESSIBILITY GUIDELINES
2 =	SOME OF THE FACILITIES/PARK AREAS MEET ACCESSIBILITY GUIDELINES
3 =	MOST OF THE FACILITIES/PARK AREA MEET ACCESSIBILITY GUIDELINES
4 =	THE ENTIRE PARK MEETS ACCESSIBILITY GUIDELINES
5 =	THE ENTIRE PARK WAS DEVELOPED/RENOVATED USING THE PRINCIPAL OF UNIVERSAL DESIGN
PLEASE SEE PAGE 12 FOR THE TABLE INVENTORYING CITY OF HILLSDALE PARKS	

Resource Inventory

In addition to recreation facilities, The City of Hillsdale is also home to a wide variety of cultural and natural resources.

Recreational Programming

⁴ The analysis of barrier free access was provided by the City of Hillsdale, based upon its knowledge of the parks and understanding of barrier-free access. A professional analysis may produce different results.

The City of Hillsdale provides the following recreation programs to the general public in collaboration with local organizations and schools.

CITY OF HILLSDALE RECREATION PROGRAMS

PROGRAM	AGE/GRADE	DESCRIPTION
YOUTH BASKETBALL	K-3RD GRADE	A 5-WEEK PROGRAM ON THE BASIC FUNDAMENTALS OF BASKETBALL
BOYS/GIRLS BASKETBALL	3RD -6TH GRADE	YOUTH LEAGURE BASKETBALL
WOMEN'S VOLLEYBALL	ADULTS 16 YRS. +	UPPER/LOWER DIVISION VOLLEYBALL LEAGUE PLAY
FIELDS OF DREAMS TOUNAMENT SERIES	14 & UNDER	BASEBALL TOURNAMENTS (4 ANNUALLY)
GIRL'S SOFTBALL	AGES 8-14	SUMMER LEAGUE PLAY – COUNTYWIDE PARTICIPATION
BOY'S BASEBALL	AGES 8-14	SUMMER LEAGUE PLAY – COUNTYWIDE PARTICIPATION
YOUTH TENNIS	K-8TH GRADE	ONE WEEK INSTRUCTION CAMP HELD IN JULY
TACKLE FOOTBALL	3RD -6TH GRADE	YOUTH LEAGUE WITH HILLSDALE COLLEGE INVOLVEMENT
T-BALL/COACH PITCH	AGES 4-8	4-WEEK SUMMER LEAGUE, PREPARING KIDS FOR KID PITCH BALL

Soils

The primary soil types within the City of Hillsdale as well as significant portions of Hillsdale Township are placed in the Fox-Boyer Association which is characterized as “nearly level to steep, very deep, well drained sandy loams and loamy sand outwash plains.” The remaining soils are placed in the Riddles-Hillsdale Association which is characterized as “gently sloping to steep, very deep, well drained, loamy soils on ground moraines and end moraines.”⁵

⁵ All information is adapted from the Soil Survey of Hillsdale County, Michigan.

Topography

Middle and South Sand Lakes and the wetlands around the St. Joseph River in the City of Hillsdale are low points with an elevation of 1,066 feet. Baw Beese Lake and portions of the City of Hillsdale have an elevation of 1,099. High points are located along the western edge of the City of Hillsdale with an elevation of 1,197 feet.

Land Use

Commercial uses predominate along M-99 (please see the Future Land Use map) and industrial uses are recommended adjacent to that area. Public/quasi-public uses are recommended along parts of the St. Joseph River, the Barber Lakes, and Baw Beese Lake. Residential uses are recommended for the majority of the City of Hillsdale. Finally, agriculture is recommended for south central Hillsdale Township. The future land use map from the Hillsdale County Comprehensive Plan was used for this analysis. However, it should be noted that Hillsdale Township's future land use plan concentrates suburban residential development around the City of Hillsdale as well as Middle Sand Lake and South Sand Lake. Agricultural land uses and conservation areas were recommended for the majority of the Township.

Water Resources

The St. Joseph Watershed covers the entire Hillsdale area. The river flows through Hillsdale Township and the City of Hillsdale south to north and the Hillsdale Mill Pond is an impoundment of the river (please see the Hydrology and Topography map). Baw Beese Lake, Bull Head Lake, Winona Lake, and the Barber Lakes are located on the periphery of the City of Hillsdale. Middle Sand Lake and South Sand Lake are located in the western edge of the Township and King Lake is located on the southern boundary of the Township. Wetlands are located primarily along the peripheries of local rivers and streams. These resources offer the opportunity to educate students about the importance of aquatic resources, the natural and manmade features which affect them, and the need to protect them.

¹ All information is adapted from the Soil Survey of Hillsdale County, Michigan.

Chapter 4

Descriptions of the Planning and Public Input Processes

City of Hillsdale

Description of the Planning Process

The development of the initial edition of the City of Hillsdale Recreation Plan included the following steps:

- The City of Hillsdale recognized the need to update the 2018-2023 Recreation Plan
- The Recreation Planning Advisory Committee was formed; it is comprised of the City Planning Commission.
- The City conducted an online community survey.
- A mission statement and goals and objectives were developed based upon those surveys and other information available to the Joint Recreation Planning Advisory Committee.
- City staff reviewed, updated, and drafted a revised plan.
- The Recreation Planning Advisory Committee verified the mission statement and goals and objectives on XXXXX based upon the drafting of the Plan.
 - The Recreation Advisory Committee provided the plan for public review from XXXXX through XXXXX and held a public hearing on XXXXXXXX. The Plan was approved by the Committee and recommended for adoption by the City Council.
- The City Council adopted the Plan on XXXXXXX.

Description of the Public Input Process

- An online survey was developed by the Recreation Planning Advisory Committee and made available to the public.
- The City of Hillsdale posted the survey on its home website, City Facebook page, and Recreation Facebook page.

The survey was also shared with the Hillsdale County Senior Services Center seeking response from the senior community. Having received no response, this information was not included in the survey results.

Chapter 5

Goals and Objectives

City of Hillsdale

Goals and Objectives

The following mission statement was developed for the joint recreation Plan:

To work collaboratively to provide diverse, year-round recreational opportunities for all, enhance our natural setting and make the Hillsdale area a destination for recreation.

The following goals and objectives were developed to implement the mission statement:

#1	Enhance current and develop new opportunities for Hillsdale area residents and visitors to participate in a variety of recreational activities. <ul style="list-style-type: none">a. Continue to manage website and social media sites providing up to date information with regard to activities and facilities; andb. Develop a youth advisory board; andc. Continue the development of community festivals and events; andd. Partner with local entities, including schools to develop environmental education/nature center and other community wide recreation programs; ande. Partner with other organizations to develop recreation and wellness programming and facilities for senior citizens; andf. Explore funding opportunities for the improvement and development of recreational facilities; andg. Continue with park renovations/improvements/developments creating recreation destinations within the City and Township; namely the Baw Beese component and trails connectivity (Headwaters Recreational Authority).h. Continue to explore new recreation program opportunities.
#2	Create a community identity that enhances the City's positive attributes and natural resources. <ul style="list-style-type: none">a. Identify and promote existing recreation opportunities as they relate to what makes the area unique; andb. Collaborate with area businesses, industry, and educational institutions that serve the recreational consumer; and

	<ul style="list-style-type: none"> b. Develop a signature festival; and c. Continue to develop the Recreation website.
#3	<p>Improve the area park system by enhancing existing facilities and planning for expansion of additional recreational spaces.</p> <ul style="list-style-type: none"> a. Continue to develop and promote the Baw Beese component of the park system as a recreation destination; and b. Explore and determine feasibility of campground development/expansion; and c. Improve existing parks and facilities and equipment; and d. Explore funding of recreational opportunities; and e. Promote connectivity of the park system through trails; and f. Create uniform way finding and parks identification systems; and g. Encourage year-round use of parks; and h. Encourage public participation in renovation of local parks.
#4	<p>Expansion and improvement of trails in the City.</p> <ul style="list-style-type: none"> a. Headwaters Recreational Authority to continue to promote trail system development with emphasis on loops; and b. Construct a trail connecting the Jonesville Rail Trail to the Hillsdale Baw Beese Trail; and c. Participate in place making focus groups to design and help implement ability to walk/Promote opportunities to walk/bike to destinations, i.e. downtown districts, parks, schools, etc.; and d. Encourage non-motorized transportation to destinations through promotion (i.e.; signage, bike racks, parking); and e. Develop printed and electronic mapping systems of current and proposed trails available to the public via publication and internet.

Background Information

Input into developing the goals and objectives listed above included:

- existing recreation facilities available to City residents, regardless of the provider;
- the health, age, and disabilities of City residents;
- possible funding and acquisition opportunities for land and facilities; and
- responses from the recreation survey and the trail network map.

#1. **Enhance current and develop new opportunities for Hillsdale area residents and visitors to participate in a variety of recreational activities**

The Hillsdale Area is rich with a multitude of recreation facilities and programs as well as natural resources, however; more needs to be done to promote and increase opportunities to enjoy those community assets. Ongoing development of the website must continue providing current recreation information which will peak the interest of its viewers.

The development of a youth advisory board, development of community festivals, and environmental education are examples of areas of improvement and expansion of the recreational experience in the area. These objectives bring forth the realization of the importance of alternative funding be it through business/industry, fee structures, grants or volunteer services.

The renovation of Sandy Beach has created a recreation destination along the Baw Beese Lake park system in the City of Hillsdale. It has spawned the creation of a comprehensive Baw Beese Park System Master Plan outlining a plan for all of the 3 parks and the Baw Beese Trail for upgrades and continuity, enhancing the entire system while implementing inclusive and universal play. The City of Hillsdale provides a wide variety of programs and Hillsdale Community Schools provide additional recreation programming to its student body.

As improvements are made and programming is expanded, funding becomes crucial. Building strong relationships with business and industry is of most importance. Promotion of recreation is a key factor in a stable, healthy environment and its impact on business and industry is key.

#2 Create a community identity that enhances the City's positive attributes and natural resources

The creation of a community brand promoting area recreation opportunities and natural resources will help to create this identity. The drafting of this plan which highlights nontraditional as well as traditional recreation facilities and programs and natural resources is an important first step. Sustaining a webpage on the City's, Township's, and/or Chamber of Commerce's websites is also needed if the creation of a brand for the community is to be realized. The cooperation of area businesses is also needed to create a brand, especially those that serve recreational consumers (please see the recreation inventory). Another way of creating a community identity is through a signature festival. The promotion of recreation and natural resources should also encourage greater usage of recreational facilities and programs which will result in a healthier community.

#3 Continue to improve the area park system by enhancing existing facilities and planning for expansion of additional recreational spaces

The City of Hillsdale, in collaboration with local service clubs, focuses on the enhancement and renovation of its park system. Re-energizing the parks, many of which have historical value within the City, will help to improve recreational opportunities for residents of all ages and attract visitors into the area.

As improvements to the parks are being made, special attention is also being placed on improving and creating barrier free access to restroom facilities, parking, and the implementation of play equipment. Also significant in the planning is compliance with recreation guidelines for safety. Due to budget constraints, safety upgrades have not been what they should throughout the park system. The City's Recreation Department is in the process of and will continue to inventory and evaluate the needs for safety upgrades with a certified playground inspector. Because of the vastness of play areas in the City, these improvements, will have to be made in phases as the budget allows. Environmental awareness is also a focus in the design process, particularly along the waterfront and parks containing ponds and streams. Areas of interest and concern are preserving/restoring natural habitats and shoreline erosion restoration/prevention. With shoreline erosion being an ongoing issue, construction of new seawalls and refurbishment of existing seawalls is one step toward slowing the problem currently facing the City's waterfront parks.

#4 Expansion and improvement of trails in the City and Township

It has been demonstrated that existing trails and sidewalks already connect many of the recreational facilities located in the Hillsdale Area. However, there are opportunities for additional connections to other parks. Hillsdale County GIS and Michigan State University Extension collaborated in 2009 for the purpose of developing trail connectivity throughout the Hillsdale County area. The Headwaters Recreational Authority, a four (4) jurisdiction body (e.g., City of Hillsdale, City of Jonesville, Hillsdale, and Fayette Townships) was formally established in 2011. A State approved Recreation and Pathways Plan details a trail network for the Hillsdale County Area, highlighting a trail connecting the newly constructed Jonesville Rail Trail with the existing Baw Beese Trail of the City of Hillsdale. The plan proposes trails which connect the participating jurisdictions creating a sense of connection among the communities, promoting recreation destinations and encouraging health and fitness. The Authority is currently in the engineering/funding process in the development of the connecting trail from the City of Hillsdale Baw Beese Trail to the City of the Jerry Russell Trail in the City of Jonesville (please see the Trail Network map) with hopes of beginning construction in 2019. The enhanced network will also create the need for printed and electronic mapping systems as well as way-finding.

Chapter 6

Action Program

City of Hillsdale

Action Program

The action program selected for the 2024-29 planning period contains the following initiatives:

1. Continue to enhance current informational websites with links to other sites within the County (CIS, GIS, Senior Services Center, businesses, etc.) highlighting available recreational opportunities and natural resources. Continue open and current dialogue with the public through social media.
2. Develop a Festival Committee to create and promote a signature festival in the area. Work through Hillsdale Business Association in the Downtown District and local vendors to create and develop community involvement and a sense of unity.
3. Work with schools on the development of nature centers and environmental projects. Develop a Youth Advisory Board representative of all ages to participate in the development of the above mentioned activities as well as expansion of new recreational opportunities in the area.
4. Continue to work on expansion of recreational programs and opportunities made available to the community. Work with business owners and artisans to collaborate on and promote workshops and classes.
5. Continue to develop a way finding signage system throughout the community through *Project Rising Tide* and focus groups thereby creating visibility to local sites and vendors as well as flow and continuity within the area.
6. Continue renovation and development to the chain of lake front parks in accordance with the adopted Baw Beese Park System Improvement Master Plan and encouraging expansion of recreational opportunities. Continue "adopt a park" projects through service groups and residential districts in order to improve and maintain local/neighborhood parks.
7. Continue to develop community identity by way of branding, logos and festivals through involvement with *Project Rising Tide* and local focus groups.
8. Continue to partner with Headwaters Recreational Authority in regard to trails connectivity within Hillsdale County. Offer continued support as the Authority moves forward with its project timeline for connection of the City of Jonesville Trail and Hillsdale's Baw Beese Trail. Maintain discussion with MDOT concerning improvements to the Hill-Jo Trail along M99. Continue to prioritize future trails projects based on topographical and community need thereby creating opportunity for economic networking and growth throughout the area.

Appendix A

Population Summary

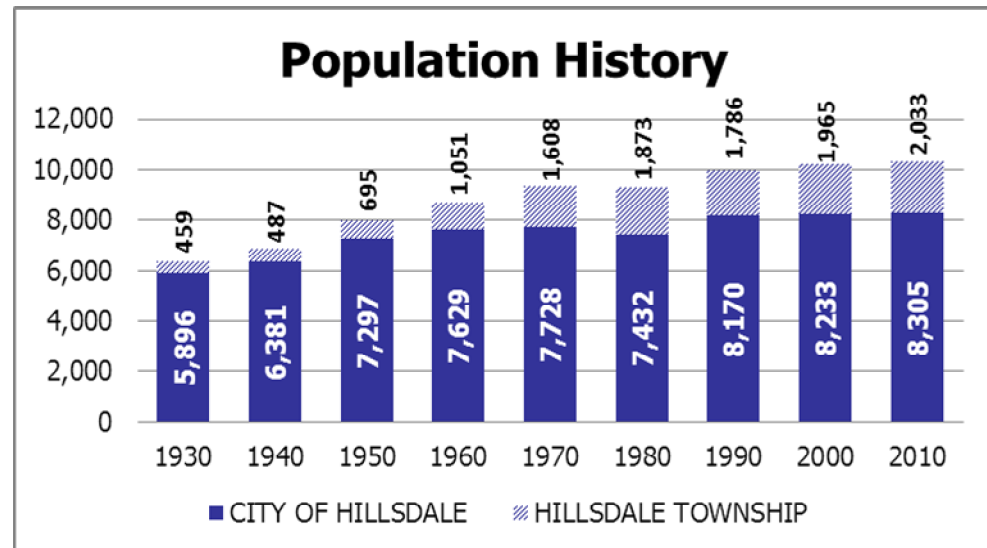
City of Hillsdale

The demographic composition of Township and Village residents has an effect upon their recreational needs. For example:

- **Population History & Projections** – establish the need for general recreational facilities (standards for which are based upon the size of the population).
- **The Age & Sex of the Population** – further refine the need for general recreational facilities balanced among various age groups and gender interests.
- **Household & Family Composition** – further refine the need for general recreational facilities balanced between family-oriented and individual activities.
- **Racial & Ethnic Composition** – further refine the need for general recreational facilities balanced among the various interests of racial and ethnic groups.
- **The Disabilities of Residents** – establish the need for special recreation facilities and disability accommodations to general recreation facilities.
- **Income** – helps to illustrate the need for publicly-funded recreational facilities.

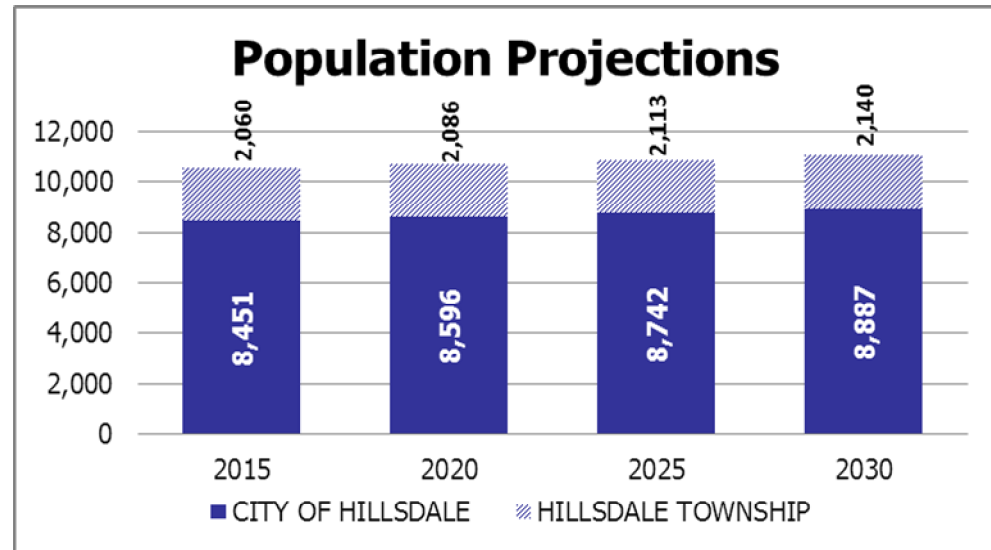
Population History & Projections

The combined population of the City of Hillsdale and Hillsdale Township was comprised of 10,338 people in 2010, with approximately 4 out of 5 residents living in the City. The adjacent figure shows fairly steady population increases in both the City and the Township since 1930. It is interesting to note that a greater percentage of residents lived in the Township in 2010 than 1930.



A simple projection model has been used to estimate population growth that might reasonably be expected in the future for the City and the Township.

This model describes a pattern of population growth in which the population level will continue to change at a given rate based upon the estimated changes in population between 1980 and 2010. Based upon this information, it is reasonable to expect that the populations of the City of Hillsdale and Hillsdale Township will continue to increase slightly (please see the adjacent figure). It is also reasonable to expect that the 2020 population for Hillsdale Area will be around 10,662 and the 2025 population will be around 10,855. Approximately 80% of the population will continue to live in the City.



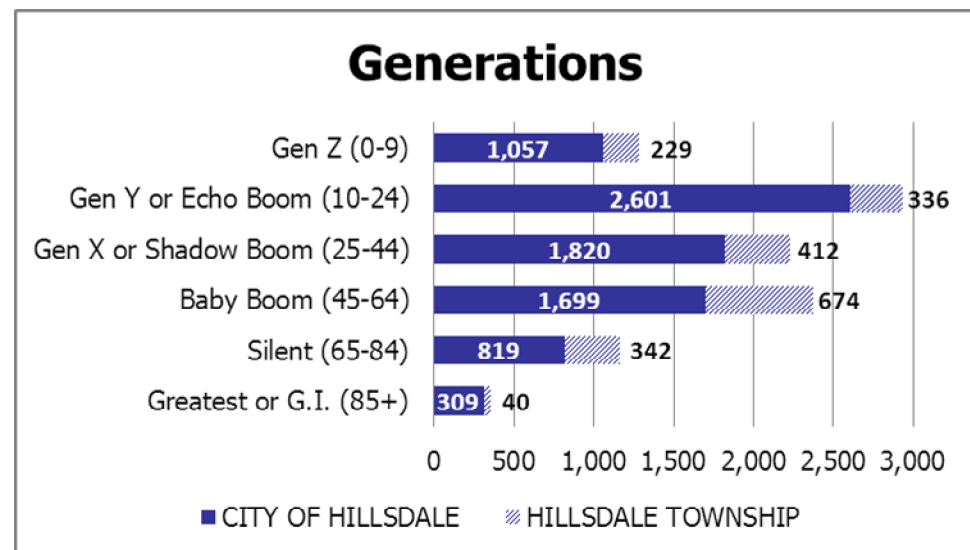
Age & Sex of the Population

In 2023 the median age of City of Hillsdale residents was 30.1 years. In comparison, the median age of City residents was younger in the Year 2000 was 29.7 years.

As the figure below illustrates, 'baby boomers' –people between 45 and 64 years of age in 2010– accounted for 20% of City residents and 33% of Township residents. 'Gen X' or 'Shadow boomers' –people between 25 and 44 years of age in 2010– accounted for 20% of all Township residents and 22% of the City residents. 'Gen Y' or 'Echo boomers' –people between 10 and 24 years of age in 2010– accounted for 31% of City residents and 17% of Township residents. 'Older generations' –people at least 65 years of age in 2010– accounted for 14% of City and 19% of Township. 'Younger generations' –people less than 10 years of age in 2010– accounted for 13% of City residents and 11% of Township residents. Over half of City and Township residents were female in 2010.

AGE OF THE POPULATION

	HILLSDALE TOWNSHIP	CITY HILLSDALE
TOTAL	1,965	8,305
MALE	994	3,901
FEMALE	1,039	4,404
Under 5 YEARS	87	519
5 to 9 YEARS	142	538
10 to 14 YEARS	130	485
15 to 19 YEARS	122	904
20 to 24 YEARS	84	1,212
25 to 34 YEARS	165	942
35 to 44 YEARS	247	878
45 to 54 YEARS	363	927
55 to 59 YEARS	149	445
60 to 64 YEARS	162	327
65 to 74 YEARS	224	464
75 to 84 YEARS	118	355
85 YEARS & OVER	40	309



Household & Family Composition

There were 3,729 households in the Hillsdale Area in 2010 and 2,970 of them were located in the City. Approximately two-thirds of all households were comprised of 1 (33%) or 2 (33%) people. Approximately one-quarter of all households were comprised of 3 (14%) or 4 (11%) people.

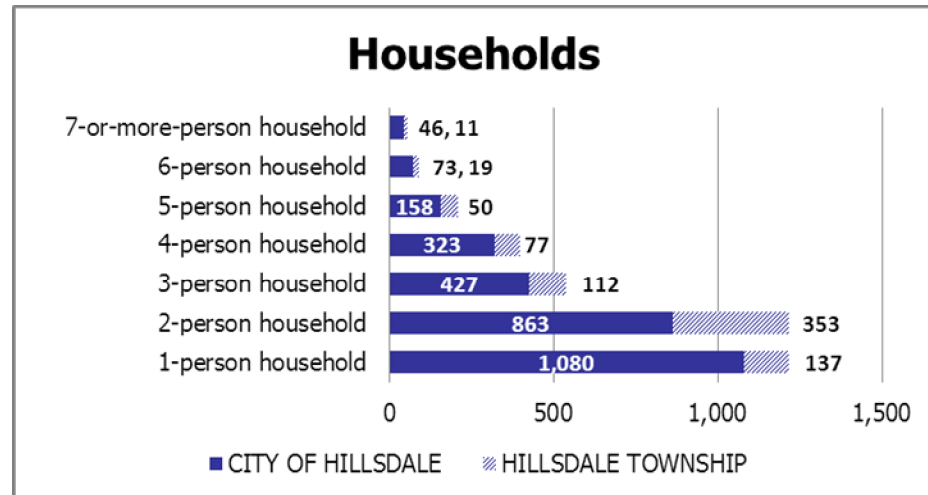
Although families comprised the overwhelming majority of Hillsdale Area households in 2010, more than a third (39%) was not. The average household size in Hillsdale Township was 2.55 people and the average family size was 2.86 people. The average household size in the City was 2.35 people and the average family size was 3.03 people.

Racial & Ethnic Composition

Race and ethnicity are not significant issues given that the overwhelming majority of the population of the Hillsdale Area was white in 2023 and only a small minority considered themselves to be Hispanic. For example, 87.1% of City residents were white in 2023. Approximately 3.41% of the population of the City Hispanic and 1.75% were Black or African American,

Disability of Residents⁶

Disabled individuals comprised 13% of City of Hillsdale residents five years old or older in 2021. However, age is often a determining factor in the distribution of disability. For example, disabled individuals comprised 32.2% of Hillsdale City residents age sixty-five or older. Disabled individuals only comprised 13% of Hillsdale City residents aged from twenty-one to sixty-four years in 2019. Finally, disabled individuals only comprised 4.1% of Hillsdale residents under age eighteen in 2019.



DISABLED POPULATION AS OF 2023

	CITY OF HILLSDALE
UNDER 18 YEARS	
WITH A DISABILITY (% OF POPULATION)	4.1%
18 TO 64 YEARS	
WITH A DISABILITY (% OF POPULATION)	13%
65 YEARS AND OLDER	
WITH A DISABILITY (% OF POPULATION)	32.2%

Income

The median household income in the City of Hillsdale (\$47,817) was less than the median income for Michigan (\$72,400) in 2023, although the median household income in Hillsdale Township (\$86,370) was higher.

Appendix B

Recreation and Resource Inventories

City of Hillsdale

NRPA PARK STANDARDS

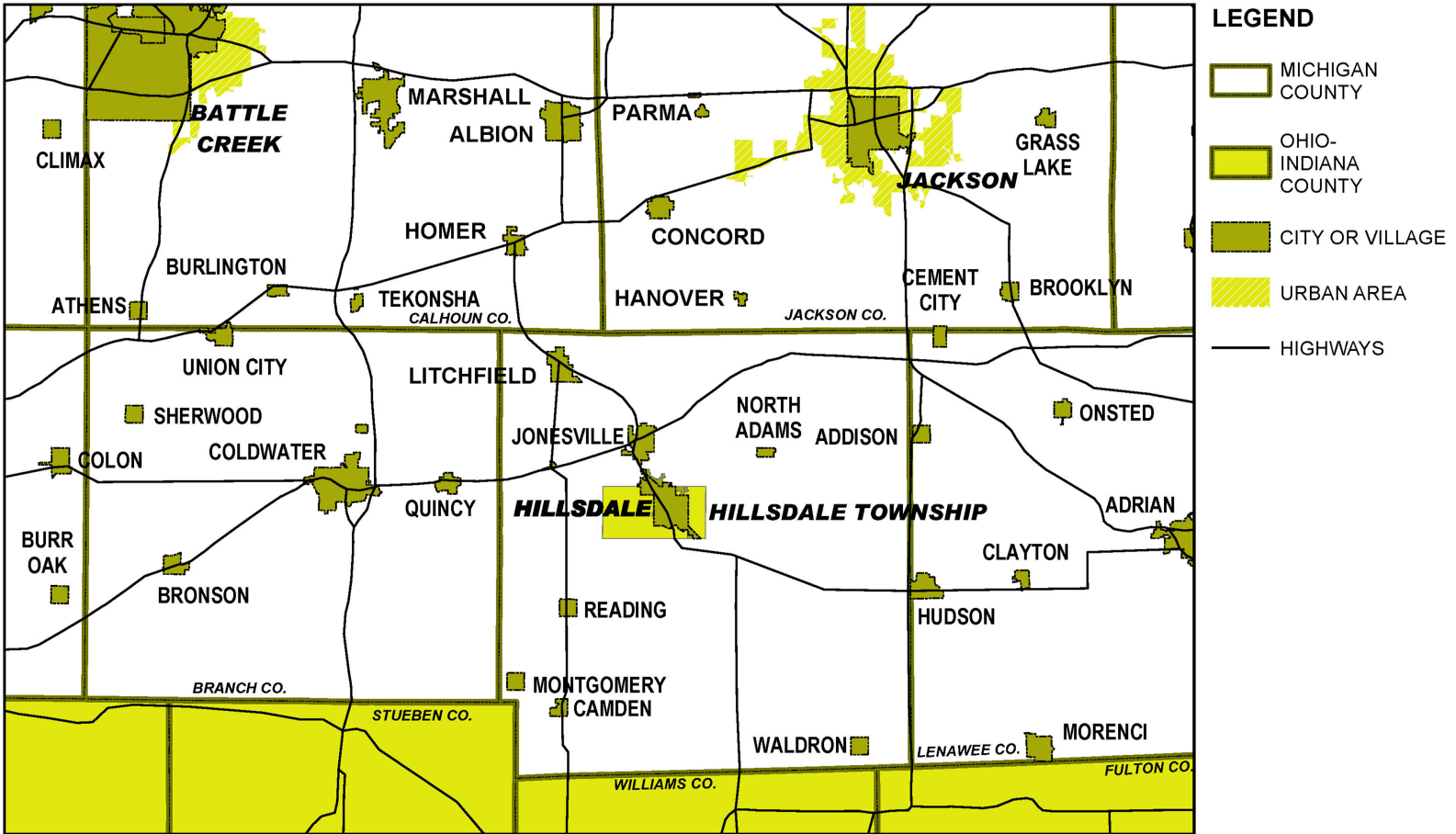
TYPE OF AREA	USE	SERVICE AREA	SIZE	ACRES/ 1,000	SITE FEATURES
MINI-PARK	SPECIALIZED FACILITIES THAT SERVE A CONCENTRATED OR LIMITED POPULATION OR SPECIFIC GROUP SUCH AS TOTS OR SENIOR CITIZENS.	LESS THAN ¼ MILE RADIUS.	1 ACRE OR LESS	0.25 TO 0.50	WITHIN NEIGHBORHOODS AND IN PROXIMITY TO APARTMENT COMPLEXES, TOWNHOUSES OR HOUSING FOR THE ELDERLY.
NEIGHBORHOOD PARK OR PLAYGROUND	AREA FOR INTENSE RECREATION ACTIVITIES, SUCH AS FIELD GAMES, COURT GAMES, CRAFTS, PLAYGROUND APPARATUS AREA, SKATING, PICNICKING, WADING POOLS, ETC.	¼ TO ½ MILE RADIUS TO SERVE A POPULATION UP TO 5,000 — A NEIGHBORHOOD.	15 ACRES	1 TO 2	SUITED FOR INTENSE DEVELOPMENT. EASILY ACCESSIBLE TO NEIGHBORHOOD POPULATIONS. GEOGRAPHICALLY CENTERED WITH SAFE WALKING AND BIKE ACCESS. MAY BE DEVELOPED AS A SCHOOL PARK FACILITY
COMMUNITY PARK	AREA OF DIVERSE ENVIRONMENTAL QUALITY. MAY INCLUDE AREAS SUITED FOR INTENSE RECREATIONAL FACILITIES, SUCH AS ATHLETIC COMPLEXES, LARGE SWIMMING POOLS. MAY BE AN AREA OF NATURAL QUALITY FOR OUTDOOR RECREATION, SUCH AS WALKING, VIEWING, SITTING, AND PICNICKING. MAY BE ANY COMBINATION OF THE ABOVE, DEPENDING UPON SITE SUITABILITY AND COMMUNITY NEED.	MORE THAN ONE NEIGHBORHOOD — 1 TO 2 MILE RADIUS.	15+ ACRES	5 TO 8	MAY INCLUDE NATURAL FEATURES, SUCH AS WATER BODIES, AND AREAS SUITED FOR INTENSE DEVELOPMENT. EASILY ACCESSIBLE TO NEIGHBORHOOD SERVED.

SOURCE: ROGER A. LANCASTER, ED; 1983. RECREATION, PARK AND OPEN SPACE STANDARDS AND GUIDELINES. ALEXANDRIA, VIRGINIA: NATIONAL RECREATION AND PARK ASSOCIATION, P. 56-57.

Appendix C

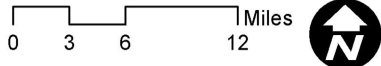
Maps

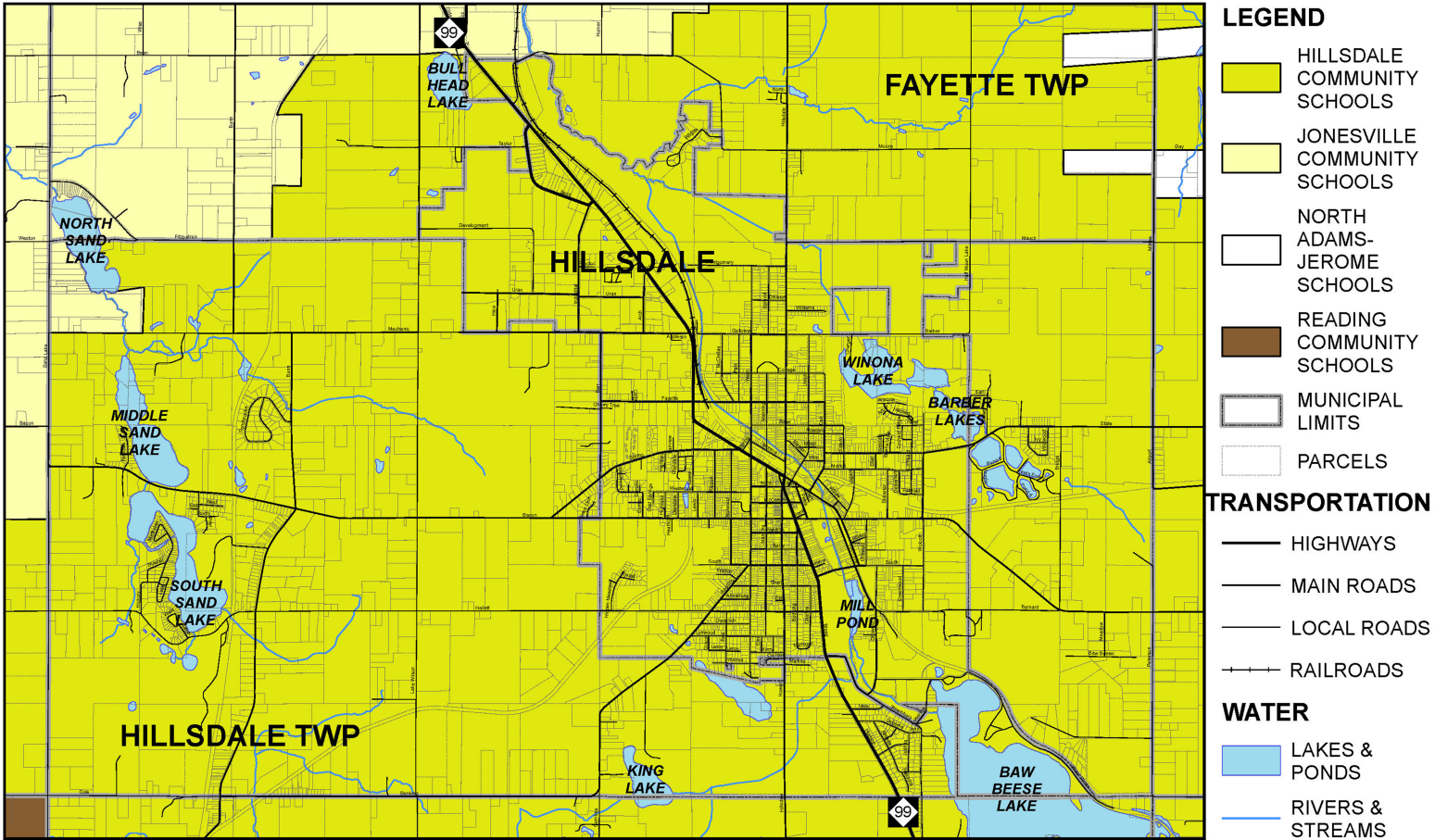
City of Hillsdale & Hillsdale Township Joint Recreation Plan



CITY OF HILLSDALE AND
HILLSDALE TOWNSHIP

LOCATION



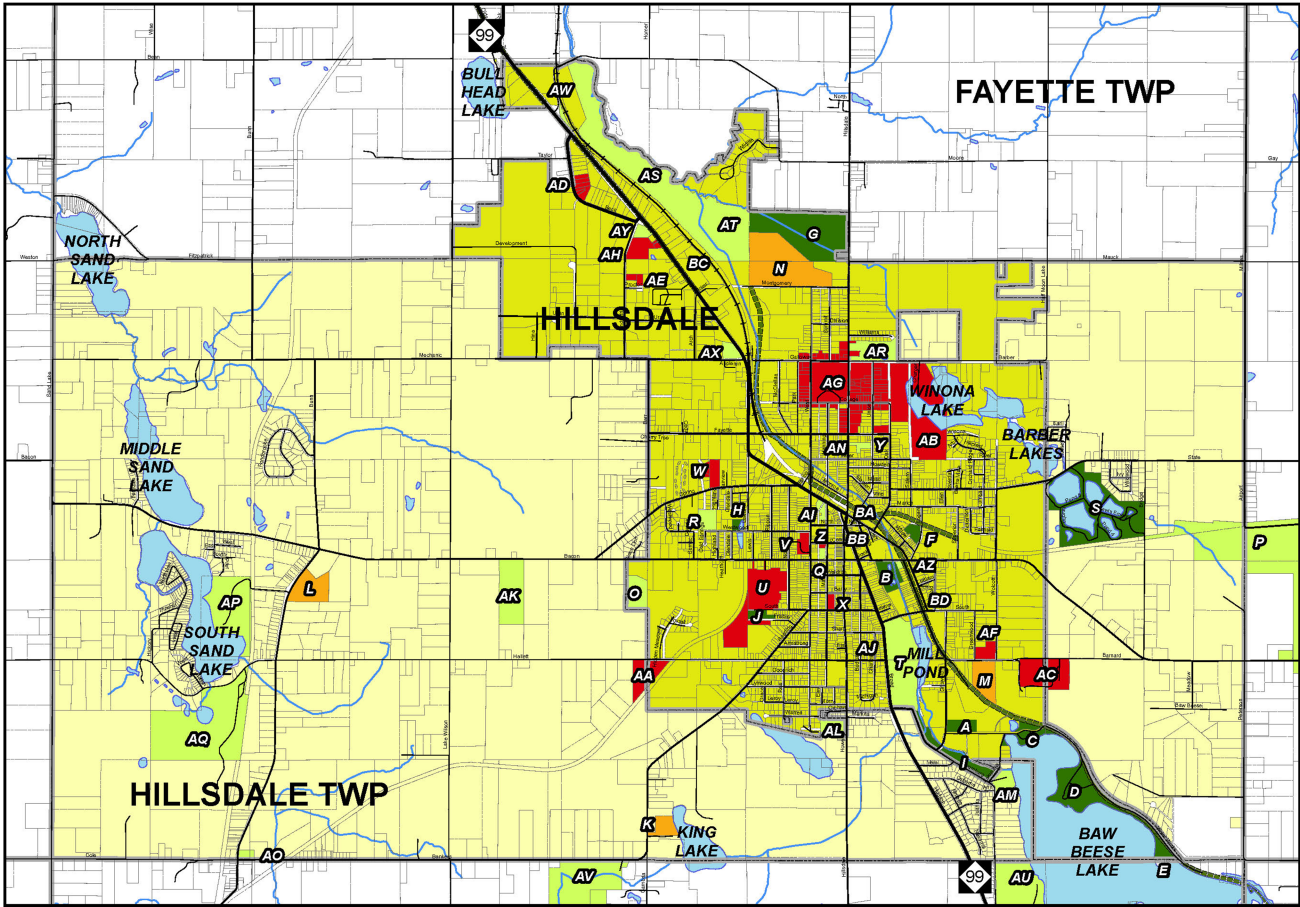


CITY OF HILLSDALE AND
HILLSDALE TOWNSHIP

SCHOOL DISTRICTS

0 0.25 0.5 1 Miles





LEGEND

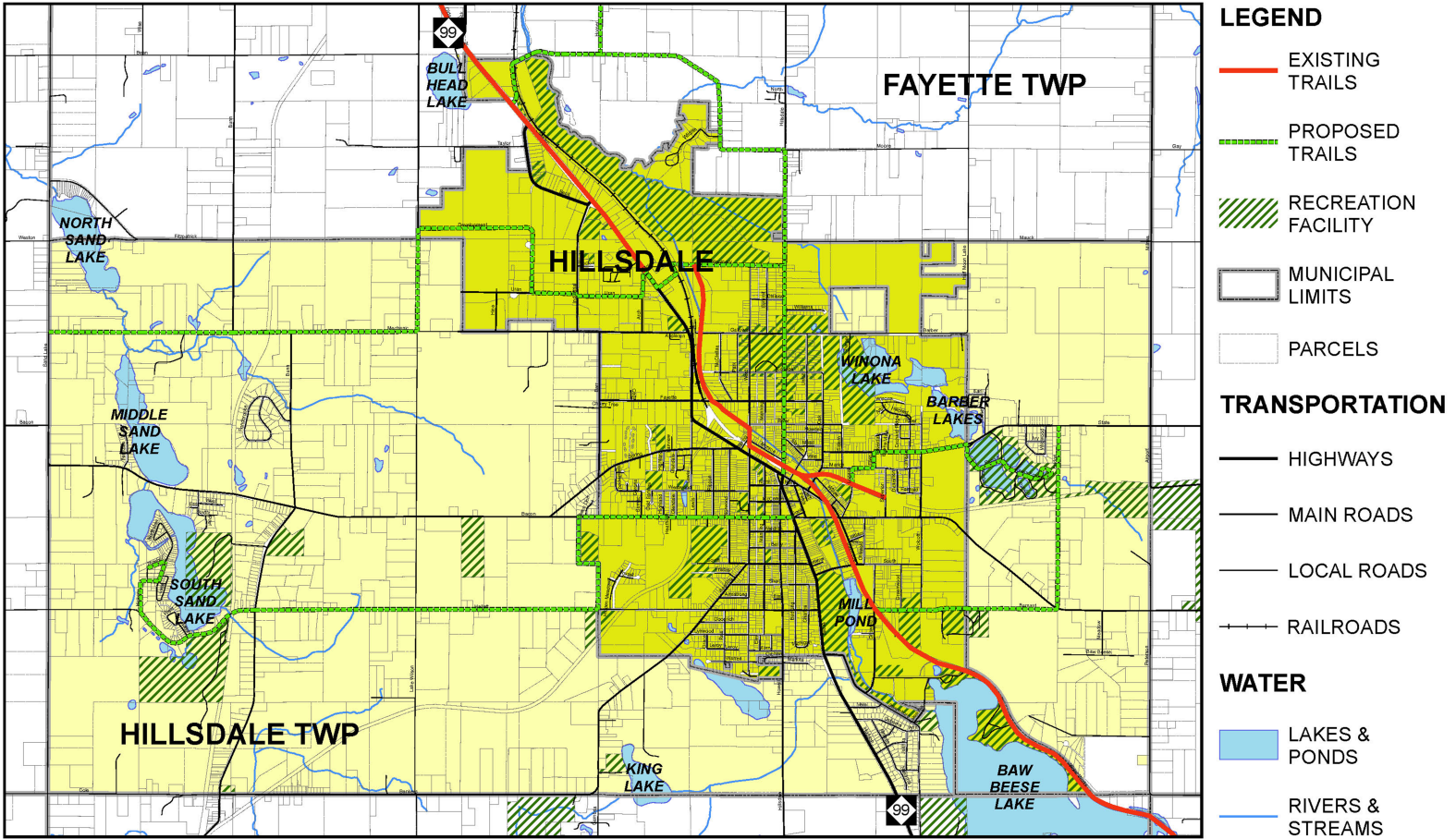
- CITY OR COUNTY PARK
 - SCHOOLS
 - OTHER RECREATION FACILITY
 - TRAIL
 - CEMETARY
 - MUNICIPAL LIMITS
 - PARCELS
- ## TRANSPORTATION
- HIGHWAYS
 - MAIN ROADS
 - LOCAL ROADS
 - RAILROADS
- ## WATER
- LAKES & PONDS
 - RIVERS & STREAMS

CITY OF HILLSDALE AND
HILLSDALE TOWNSHIP

RECREATION

0 0.25 0.5 1 Miles



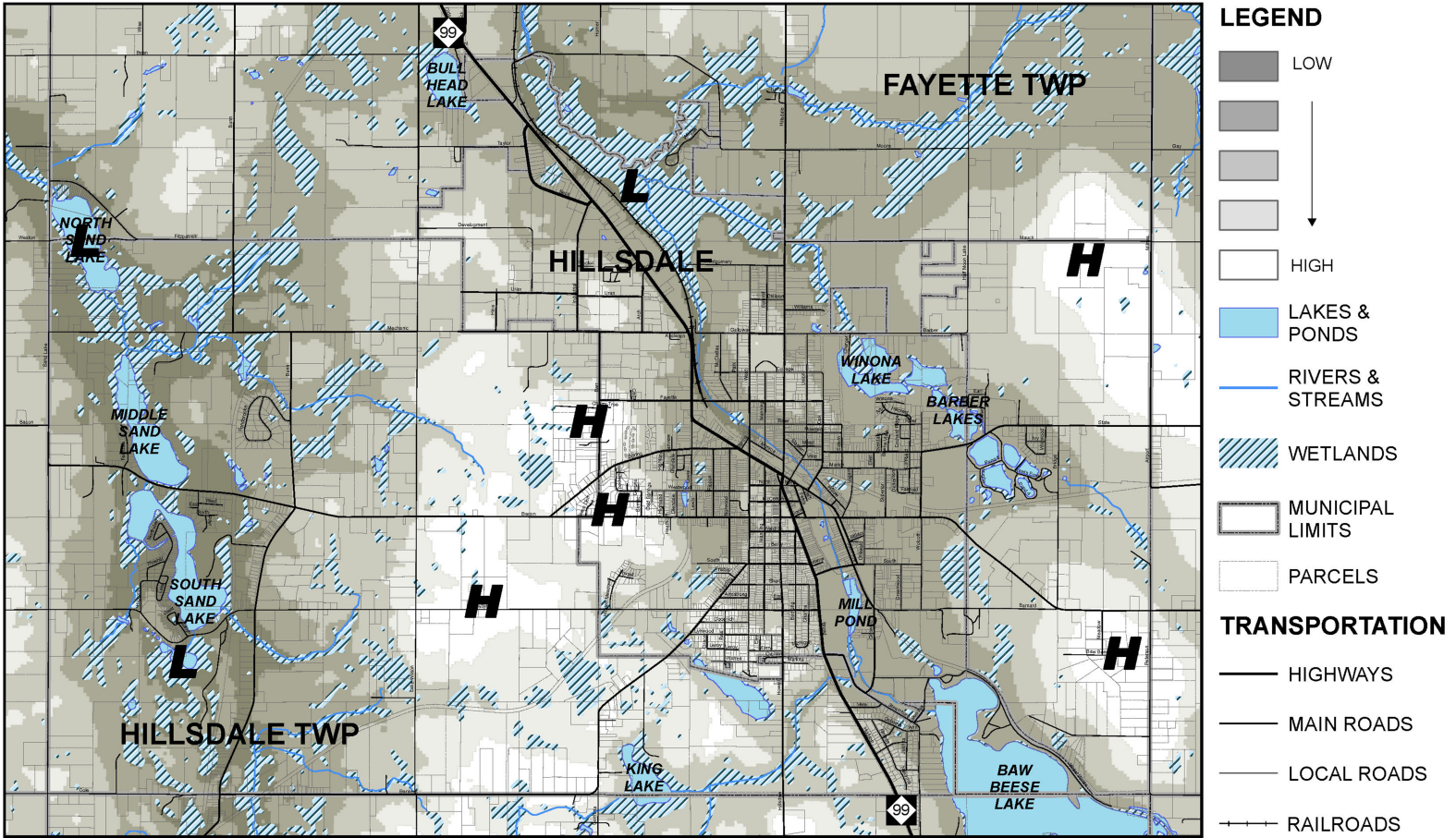


CITY OF HILLSDALE AND
HILLSDALE TOWNSHIP

TRAIL NETWORK

0 0.25 0.5 1 Miles



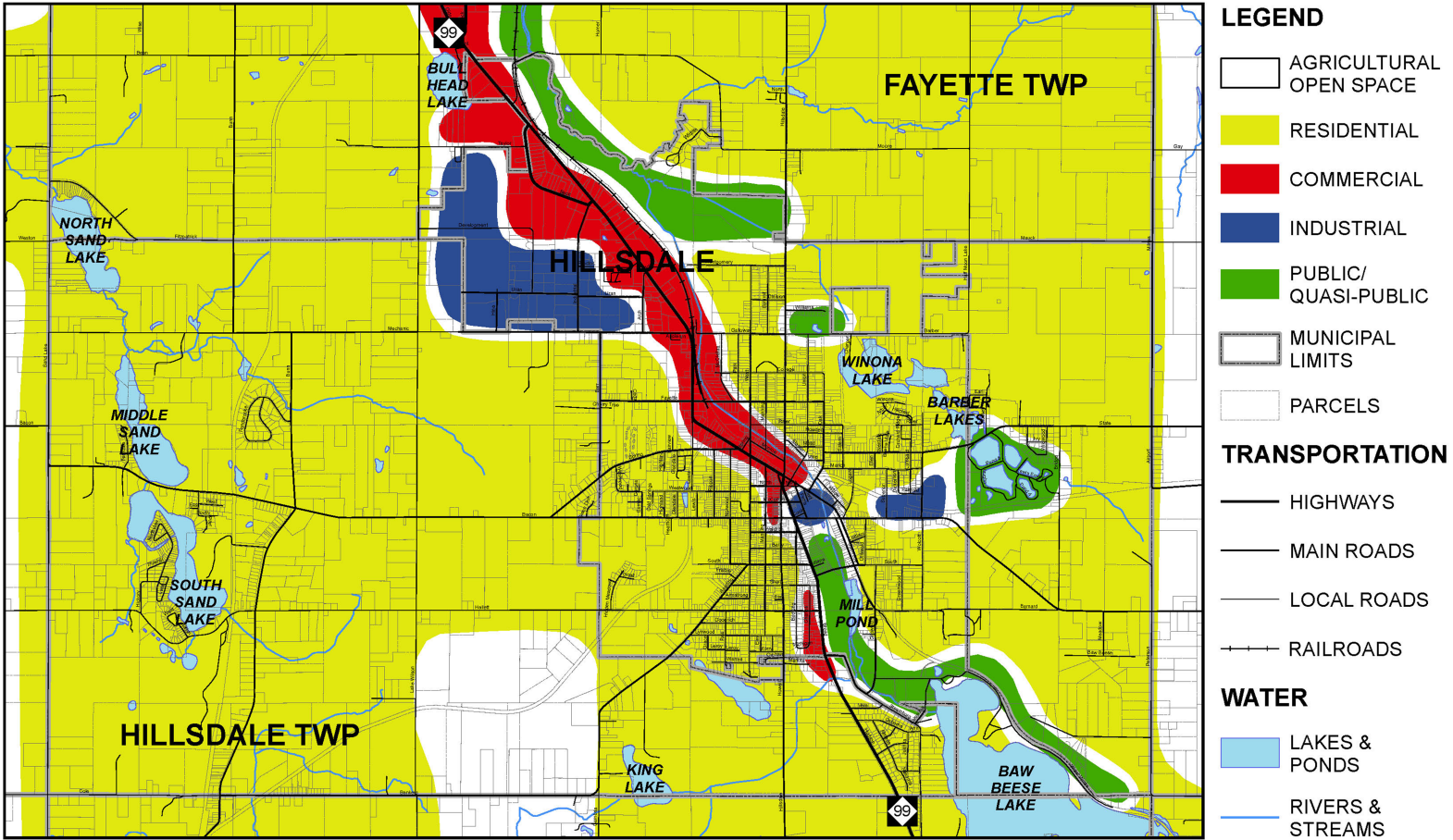


CITY OF HILLSDALE AND
HILLSDALE TOWNSHIP

HYDROLOGY & TOPOGRAPHY

0 0.25 0.5 1 Miles



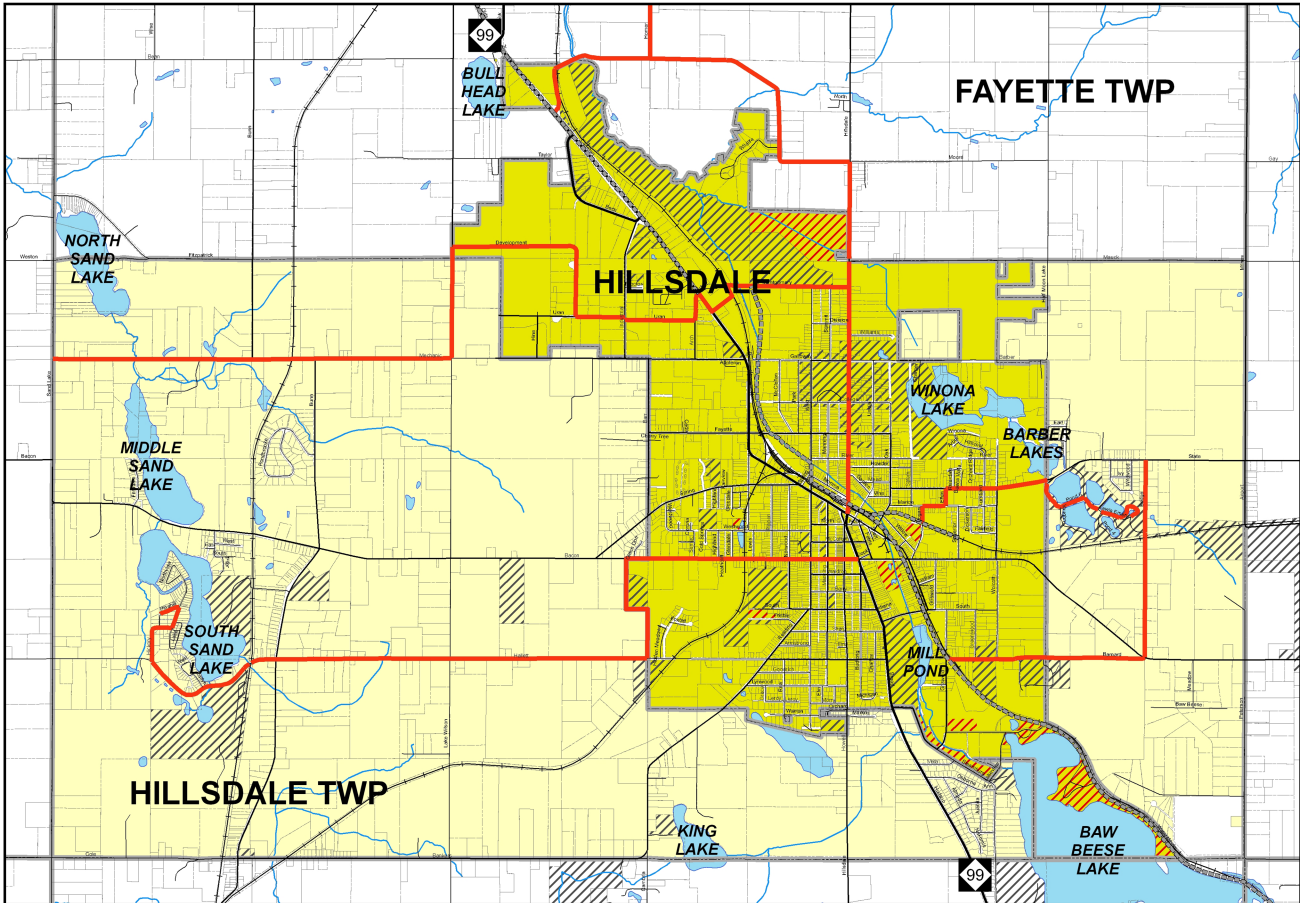


CITY OF HILLSDALE AND
HILLSDALE TOWNSHIP

FUTURE LAND USE

0 0.25 0.5 1 Miles





LEGEND

POSSIBLE PARKS

PROPOSED TRAILS

MUNICIPAL LIMITS

PARCELS

TRANSPORTATION

HIGHWAYS

MAIN ROADS

LOCAL ROADS

RAILROADS

WATER

LAKES & PONDS

RIVERS & STREAMS



Appendix D

Plan Approval

City of Hillsdale

RESOLUTION # _____

CITY OF HILLSDALE CITY COUNCIL RESOLUTION TO APPROVE 5-YEAR CITY OF HILLSDALE RECREATION PLAN 2025-2030

WHEREAS, in accordance with PA 156 of 1917, the City of Hillsdale has formed a Recreation Advisory Committee consisting of members of the City’s Planning Commission; and

WHEREAS, the aforesaid Advisory Committee has prepared a five-year Recreation Plan; and

WHEREAS, after a duly noticed public hearing held on December 17, 2025, this Recreation Advisory Committee, consisting of the City of Hillsdale Planning Commission, met to hear any public comment; and

WHEREAS, the City of Hillsdale wishes to submit the Plan to the Michigan Department of Natural Resources for approval and qualification for funding applications in the remainder of the five year period;

NOW, THEREFORE, be it resolved by the City of Hillsdale to hereby approve and adopt the 2025-2030 Recreation Plan for the City of Hillsdale.

PASSED IN OPEN COUNCIL MEETING THIS 5TH DAY OF JANUARY, 2026.

Scott M. Sessions, Mayor

ATTEST:

Katy Price, MIPMC
City Clerk

Scott M. Sessions, Mayor	_____
Matthew Bentley	_____
Jacob Bruns	_____
Bob Flynn	_____
William Morrissey	_____
Joshua Paladino	_____
Robert Socha	_____
Greg Stuchell	_____
Gary Wolfram	_____

City of Hillsdale

Agenda Item Summary

Meeting Date: January 5, 2026

Agenda Item: New Business

SUBJECT: Leadership Transition Update and Contract Amendment

BACKGROUND PROVIDED BY: David Mackie, City Manager / BPU Director

Attached is an amendment to the existing City Manager / BPU Director employment contract. Three years remain on the combined contract. The proposed amendment, which was presented to the Board of Public Utilities (BPU), Operations & Governance Committee and Mayor, provides that I would complete the remainder of the combined contract and, at its conclusion, transition out of the City Manager role to serve solely as BPU Director. The proposed amendment reduces the contract term by three months and reduces the annual salary increase from a discretionary 4% to a fixed 3%. The proposal provides both a clear leadership transition for the City and BPU and measurable cost savings over the next five years.

The BPU Board, O&G Committee and Mayor have reviewed the proposal and are supportive of the amendment's adoption.

RECOMMENDATION:

Discuss the proposed contract amendment and decide whether to approve its adoption.

AMENDMENT TO EMPLOYMENT AGREEMENT

CITY MANAGER

CITY OF HILLSDALE, MICHIGAN

This Amendment to Employment Agreement City Manager City of Hillsdale, Michigan is entered into this 1st day of January, 2026, between the City of Hillsdale, a Michigan municipal corporation, of 97 N. Broad Street, Hillsdale Michigan, 49242 (Hillsdale), and David E. Mackie (Manager/Director) of Hillsdale, Michigan. By execution of this Amendment To Employment Agreement, Hillsdale and Manager/Director seek to supplement and amend portions of the Employment Agreement as follows:

Section 2 – Term of Employment; At Will Status; Termination

- A. This agreement is for a term commencing on the 1st day of January 2026 and ending on the 5th day of July, 2028.
- C. At the end of the above Section 2A term, this agreement will continue for employment services as BPU Director, only, for a term of two-years. This agreement will renew automatically for a second two-year term, unless written notice of termination is delivered between the parties prior to 90 days before the end of the first two-year term.

Section 4 – Compensation and Benefits

A. Basic Salary

- ii Starting on July 1, 2026 and with each subsequent annual anniversary date, Mackie's Basic Salary shall automatically increase by an amount equal to the federal cost of living adjustment, for that year, plus 3%.

Effect of Amendment on Other Agreements. Except for those provisions that are expressly amended herein, the original provisions of: EMPLOYMENT AGREEMENT CITY MANAGER CITY OF HILLSDALE, MICHIGAN and the November 7, 2022 Amendment shall remain in full force and effect.

IN WITNESS WHEREOF, the parties agree to the foregoing by their execution the 5th day of January, 2026.

Employer:
CITY OF HILLSDALE

Employee:
DAVID E. MACKIE

Scott Sessions, Mayor

David E. Mackie

Katy Price, Clerk



CITY OF HILLSDALE

97 NORTH BROAD STREET
HILLSDALE, MICHIGAN 49242-1695
(517) 437-6441 FAX: (517) 437-6448
cityofhillsdale.org

What Board/Commission would you like to serve? Library

Name: Daniel LaTue

Address: [REDACTED] Hillsdale 48242
Street City Zip

Phone: Home [REDACTED] Work [REDACTED]

E-Mail: [REDACTED]

Residency is required for most Boards & Commissions.

Are you a resident of City of Hillsdale? Yes X No If so, for how long? 10 Plus years

Occupation: (if retired, former occupation) Finance Director

Please check the expertise and skills you can contribute:

- | | | |
|--|--|---|
| <input checked="" type="checkbox"/> Accounting | <input checked="" type="checkbox"/> Planning | <input checked="" type="checkbox"/> Community Relations |
| <input checked="" type="checkbox"/> Fund Raising | <input type="checkbox"/> Computers | <input checked="" type="checkbox"/> Public Speaking |
| <input checked="" type="checkbox"/> Marketing | <input checked="" type="checkbox"/> Knowledge of the Cause | <input checked="" type="checkbox"/> Finance |
| <input checked="" type="checkbox"/> Advocacy | <input checked="" type="checkbox"/> Public Relations | <input checked="" type="checkbox"/> Management |
| <input type="checkbox"/> Human Resources | <input type="checkbox"/> Legal | <input type="checkbox"/> Other <u> </u> |

Brief Educational Background:

Bachelor Degree Business Administration with
concentration in Accounting from Siena Heights University

What charitable or community activities have you **actively** participated in? Please describe any leadership role(s) you have (had) in the organization(s):

Track Derby Ticket Sales, PTO, REW Board,
School Board and current Finance Director at
Hillsdale County Senior Services center.

On what other volunteer boards/committees have you served? REW - Board
member (Past), Hillsdale Community School Board
and Volunteer at Domestic Harmony

Describe any previous activities related to government: Hillsdale Community
School board

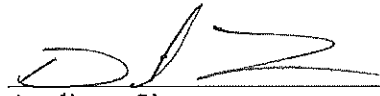
Please explain why you would be interested in serving on the council or committee: With my
back ground in Finance I believe I can work
well with the other board members to help
build up our Library.

Please explain your understanding of the City of Hillsdale:

I was born and raised in the city of Hillsdale,
I love the community and want my kids
to have the joy of growing up in a great
city.

Additional comments: I have 2 kids that both utilize
the Library

Please send your completed application to City of Hillsdale, City Manager at 97 North Broad Street,
Hillsdale, MI 49242.



Applicant Signature

5/8/25

Date